



# PILOTAGE TARIFFS 2024

REGION NORTH

# CONTENTS

Pilotage tariffs consist of a fixed part, the S tariff (starting tariff), and a variable part, the T tariff (route-dependent tariff).

Part 1 gives an explanation on the pilotage tariff structure.

Each of the Dutch seaport areas is subdivided into a number of tariff areas.

This part gives general as well as detailed maps.

There are different tariff tables for pilotage voyages to and from the pilot station, for berth shifts, and for rendezvous voyages.

These tables can be found in part 3.

In specific cases there will be a surcharge on the T tariff.

In other situations a pilot expense reimbursement is payable.

Part 4 gives an explanation of these additional tariffs.

You may be eligible to a payment discount by using direct debit.

In this scheme you will find the tariffs for the transport of persons.

This part gives the quantity discount scheme including the graduated scale to calculate the discount per sea port area.

Information about ordering a pilot and contact information.

***No liability is accepted for printing errors or spelling mistakes. No rights can be derived from this publication. Dutch law applies. In the event of any conflict or inconsistency between the English text and the Dutch text, the Dutch text shall prevail.***



# PILOTAGE TARIFFS



## 1. PILOTAGE TARIFFS

### Dutch Pilotage

The coast of the Netherlands is shaped by rivers, currents and wind, and is subject to constant and unpredictable change. No one is capable of knowing the entire coast and all the estuaries inside out and at the same time keeping that knowledge continuously up to date. For this reason the Dutch maritime pilot specialises in one particular region or port area only. From south to north we distinguish the following regions: River Scheldt, Rotterdam-Rijnmond, Amsterdam-IJmond and North.

Pilots offer their services to all ingoing and outgoing vessels irrespective of type and size. It is their aim to ensure a safe and quick passage of vessels to, through and from the various Dutch and Belgian ports, as well as to safeguard the interests of the environment.

By offering these services on a 24/7 basis, the pilots are able to meet the demands for permanent access and “just in time” delivery of vessels to the various ports. Pilot vessels at sea are manned on a permanent basis and fast launches and a helicopter are used to embark and disembark pilots round the clock.

When normal pilotage is suspended, “Shore Based Pilotage” will be offered to smaller vessels and pilots for larger vessels will embark and disembark by helicopter as an extra service. In other words, by making use of the services offered by the Dutch Pilots’ Organization, an undisturbed approach of the Dutch Ports will be guaranteed.

### Tariff structure

This booklet contains the pilotage tariffs for 2024 applicable to Region North (Delfzijl and Eemshaven areas, Harlingen and Terschelling areas).

These tariffs are in euros. Pilotage tariffs are established by the ACM (Authority for Consumers & Markets), according to a fixed tariff structure.

Should you have any questions concerning these tariffs, please contact our offices. The addresses can be found in part 6 of this booklet.

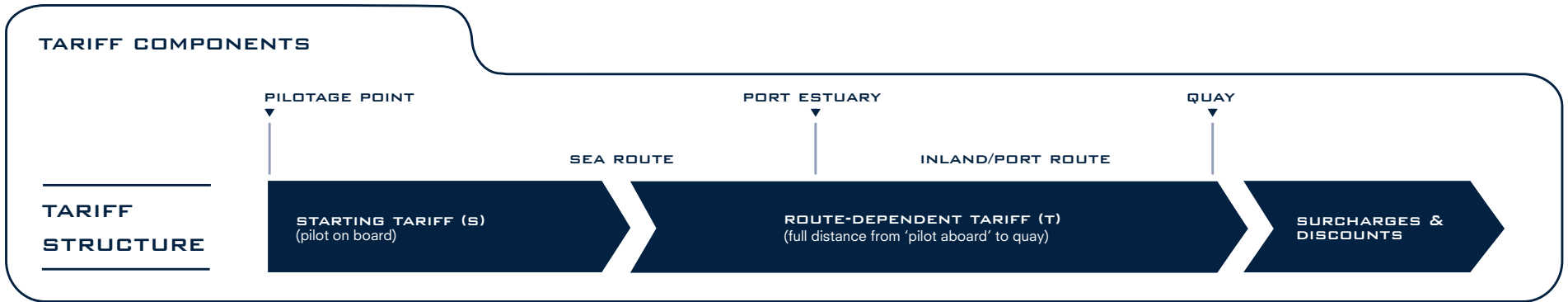
The tariff structure consists of a starting rate (S), the basic, fixed tariff for taking the pilot to and from the ship and for covering the fixed costs of Loodswezen.

This tariff is based on the actual draught<sup>1</sup> and is differentiated on the basis of the pilot boarding location (pilot station, berth shifts or rendezvous).

The route-dependent tariff (T) commences from the moment the pilot boards the vessel until the ship has arrived at its berth; the tariffs are calculated for the average duration of a pilotage service, based on historic data.

---

<sup>1</sup> Please note the following: the tariff applies to the deepest actual draught during the pilotage voyage, as determined by the pilot. The guiding principle for invoicing will be the draught as recorded on the pilot certificate.



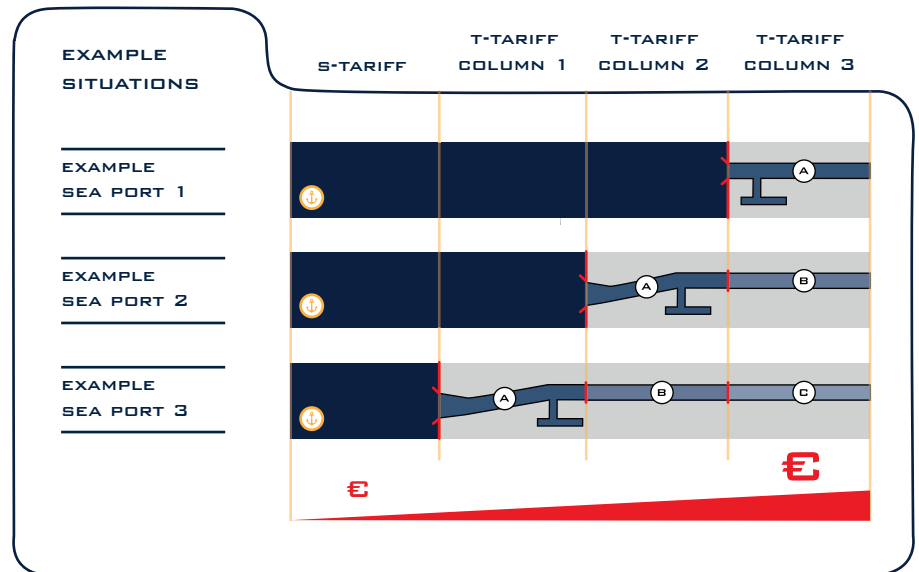
**Start tariff**

- 1 Rendezvous (trench ships and LNG Rijnmond)
- 2 Pilot station (Inbound and outbound trips)
- 3 Trips for shifting vessels

Note: The above methodology for calculating the pilotage tariffs applies to both inbound and outbound trips and the shifting of vessels.

The port areas of Delfzijl and Eemshaven have been divided into tariff areas A and B. The port areas of Harlingen and Terschelling have been divided into tariff areas A to C. All tariff areas have been divided into uniform national tariff columns.

An additional tariff (A) is applicable for special trips, e.g. special transports, navigation in ice or the simultaneous use of more than one pilot.

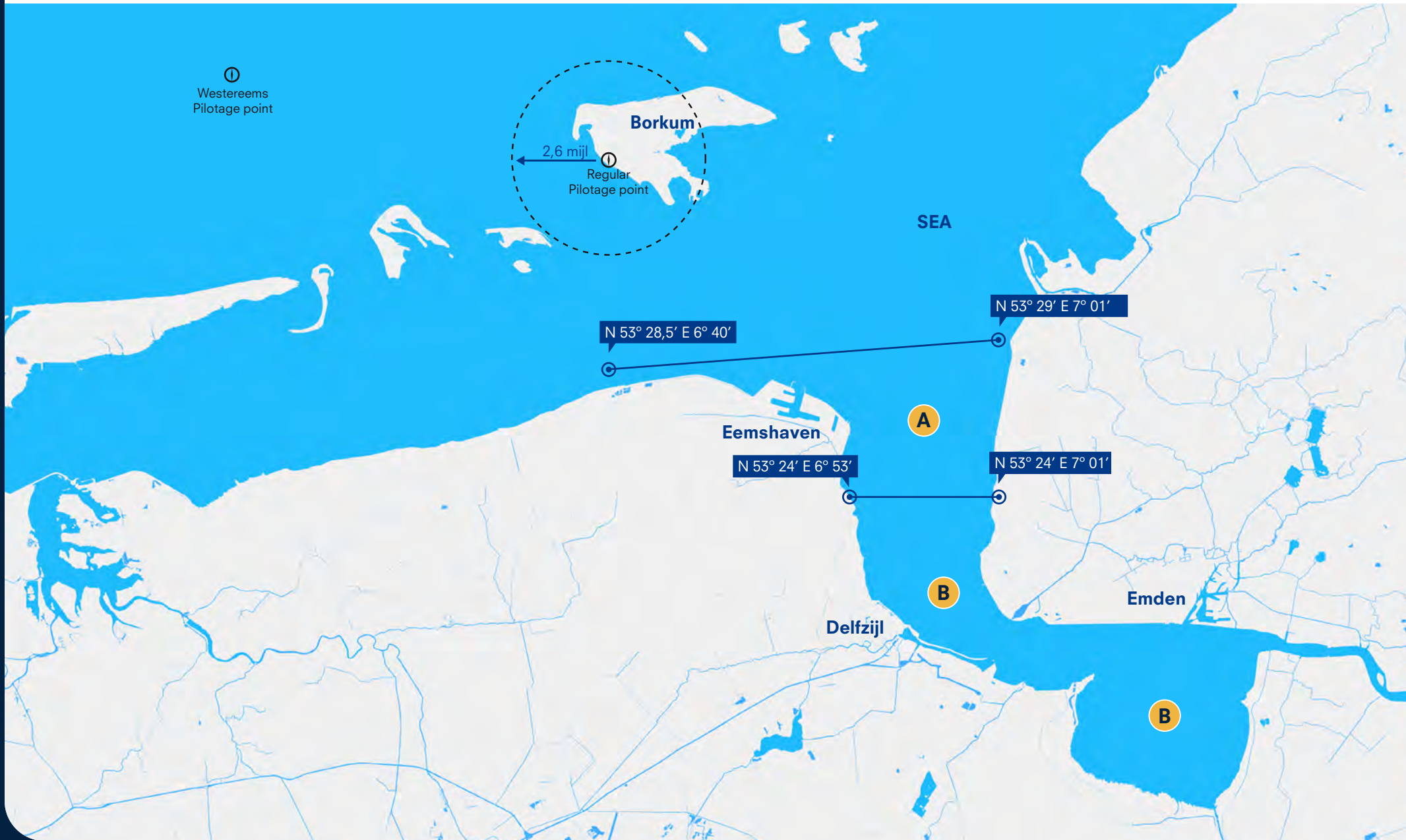


# TARIFF AREAS





DELFIJL/EEMSHAVEN - TARIFF AREA OVERVIEW

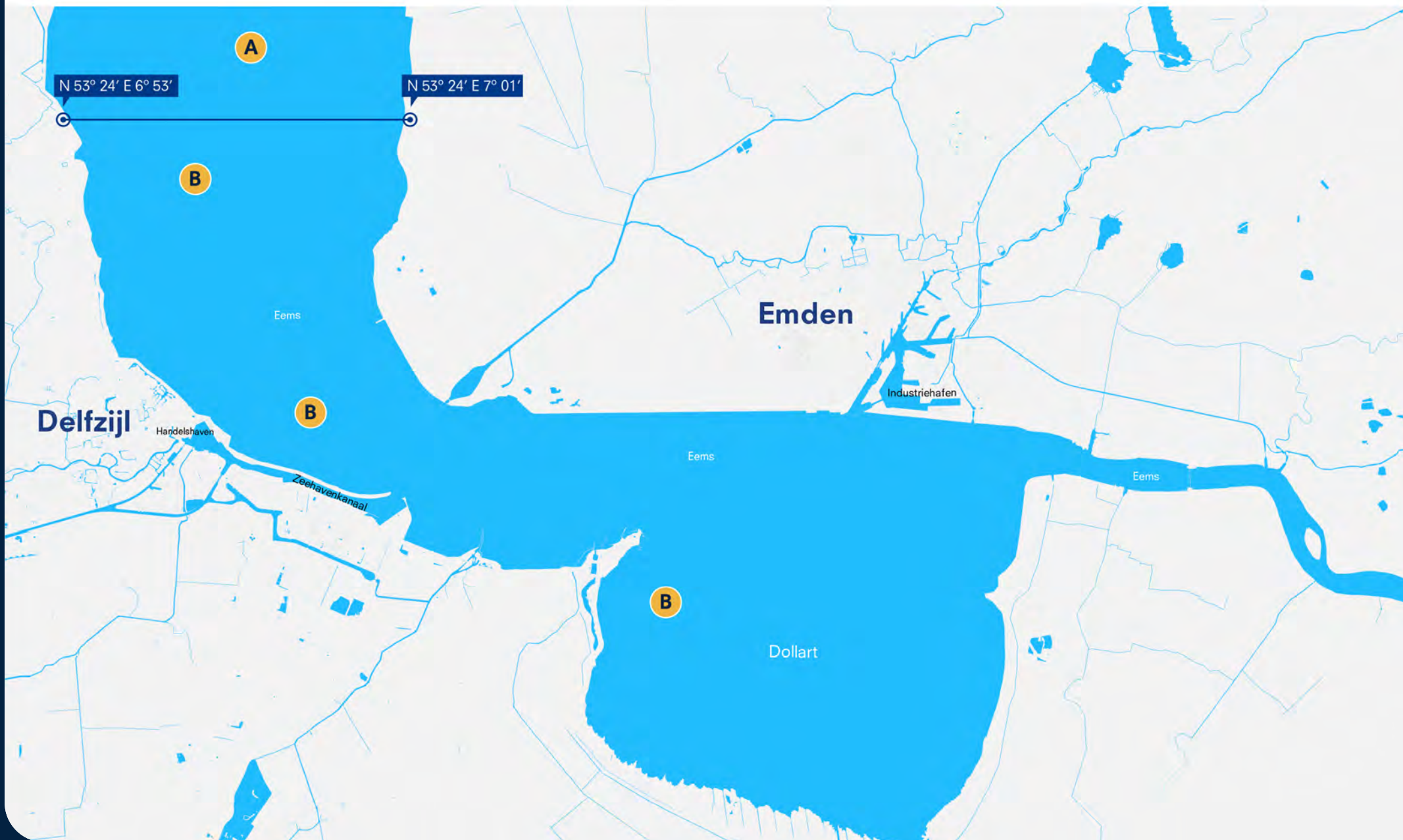


DELFIJL/EEMSHAVEN - TARIFF AREA DETAIL A

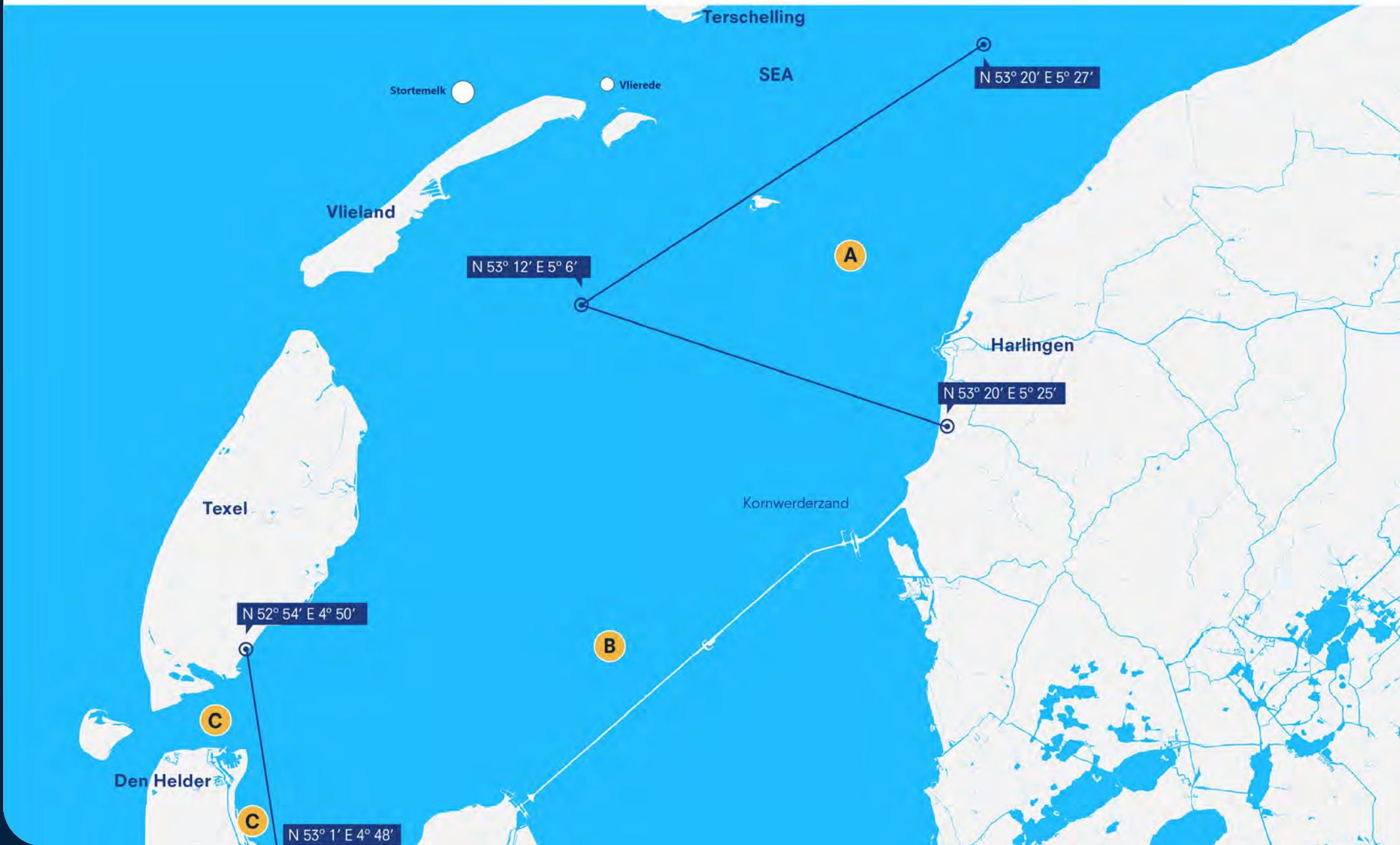




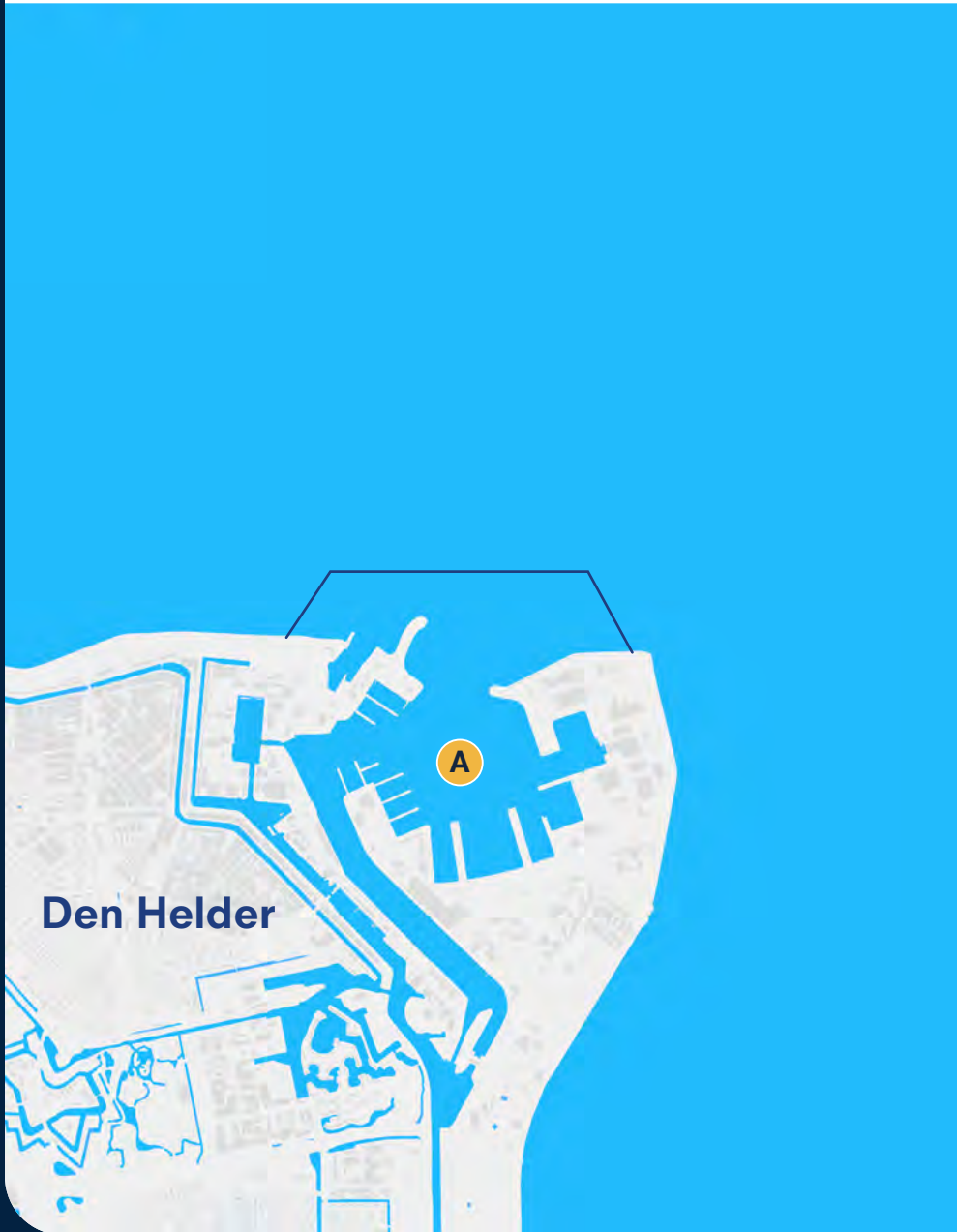
DELFIJL/EEMSHAVEN - TARIFF AREA DETAIL B



TERSCHELLING/HARLINGEN/DEN HELDER - TARIFF AREA OVERVIEW



DEN HELDER/HARLINGEN - TARIFF AREA DETAIL A AND D







# TARIFF TABLES

TO AND FROM  
THE PILOT STATION

The matrix below explains the tariff structure for regular routes for region North. It shows which tariff table, which S tariff and which T tariff column will be charged.

Sea port area Delfzijl/ Eemshaven			Sea	Sea	A	B	Sea port area Harlingen/ Terschelling			Sea	A	B	C		
			Westereems	Borkumrede	Eemshaven	Delfzijl				Harlingen	Kornwerderzand	Den Helder			
					3	6				5	7	16			
Sea	Westereems		S-IN/OUT + TC3						Sea			S-IN/OUT + TC5			
Sea	Borkumrede		S-IN/OUT + TC3	S-IN/OUT + TC3					A	Harlingen	5	S-IN/OUT + TC5	S-BS + TC1		
A	Eemshaven	3	S-IN/OUT + TC3 + TC2 (A)	S-IN/OUT + TC3	S-BS + TC1				B	Kornwerderzand	7	S-IN/OUT + TC7	S-BS + TC3	S-BS + TC1	
B	Delfzijl	6	S-IN/OUT + TC6 + TC2 (A)	S-IN/OUT + TC6	S-BS + TC4	S-BS + TC1			C	Den Helder	16	S-IN/OUT + TC16	S-BS + TC12	S-BS + TC10	S-BS + TC1

#### Explanation of colour scheme and used abbreviations:

- Ingoing and outgoing voyages (Pilot Station)
- Berth Shift

**S tariff** = Start tariff

**T tariff** = Route dependent tariff

**IN/OUT** = Ingoing and outgoing voyages (Pilot Station)

**BS** = Berth Shift voyages

**TC** = Tariff Column T tariff

For voyages where the pilot or the pilots embark or disembark at pilot station Westereems, which lies further away, an additional A tariff consisting of 4 extra tariff columns will be charged. This equals to the amount of the second tariff column of the T tariff (based on article 4.5.f of the Registered Pilots Market Supervision Decree).

PART 3

SEA PORT AREA DELFZIJL/EEMSHAVEN - INGOING AND OUTGOING VOYAGES (PILOT STATION)

- Pilotage tariffs decision ACM, 5 December 2023  
 - Pilotage tariffs are expressed in euro, exclusive of Dutch VAT

Actual draught (in dm)	S-tariff (starting tariff) in €	T-tariff (route-dependent tariff) in €															
		A, B		A		B											
		TC 1	TC 2	TC 3	TC 4	TC 5	TC 6	TC 7	TC 8	TC 9	TC 10	TC 11	TC 12	TC 13	TC 14	TC 15	TC 16
≤27	384	24	33	41	51	58	66	73	83	90	99	108	115	123	131	142	150
28	410	27	36	45	53	61	70	79	87	97	106	114	122	131	142	150	158
29	437	29	38	48	57	66	73	85	94	102	111	122	128	142	150	159	168
30	463	30	39	51	59	70	79	89	99	109	118	128	138	150	158	169	177
31	475	32	40	52	61	72	82	93	101	112	122	131	143	153	163	173	183
32	488	32	41	52	64	73	84	94	106	115	124	136	147	157	167	179	187
33	499	32	42	53	66	75	86	96	108	118	127	138	151	162	171	184	194
34	511	33	44	54	67	78	87	98	111	122	130	143	156	165	174	191	198
35	524	35	45	56	70	81	89	100	114	124	135	145	159	170	179	195	205
36	538	35	46	58	71	82	94	103	115	126	138	150	162	172	185	197	208
37	572	37	49	60	73	87	98	110	122	135	147	159	171	183	197	208	220
38	604	38	52	64	78	93	102	115	128	143	156	169	180	194	208	220	233
39	637	40	56	66	83	97	108	122	137	150	163	177	191	205	220	231	247
40	669	42	59	70	87	101	113	128	145	157	171	186	198	213	231	243	258
41	701	45	61	73	90	108	118	136	152	163	180	197	208	224	243	255	270
42	732	46	62	78	94	109	124	143	157	172	187	205	220	235	251	267	282
43	789	52	67	85	101	116	136	153	170	185	204	220	237	255	270	287	305
44	848	56	73	90	108	125	146	164	182	199	218	237	255	272	290	308	328
45	907	59	78	97	115	135	157	176	195	212	232	255	272	291	310	330	352
46	967	64	84	102	122	143	167	186	207	226	247	270	290	310	331	349	373
47	1.024	67	88	109	128	151	177	198	220	241	261	287	308	330	349	370	395
48	1.078	70	94	115	138	162	185	208	231	255	277	302	323	346	369	392	416
49	1.141	73	98	122	147	171	197	220	245	269	293	318	344	367	391	416	442
50	1.206	78	102	128	156	180	208	233	258	284	310	336	364	388	414	440	466
51	1.269	83	108	137	163	191	220	247	271	302	325	354	382	408	435	464	491
52	1.335	87	113	145	171	198	231	258	284	317	344	372	402	430	456	488	517
53	1.397	90	118	152	180	208	243	270	298	332	360	389	422	450	478	513	541
54	1.463	94	124	157	187	220	251	282	312	345	376	408	439	470	501	533	563
55	1.560	100	133	168	200	234	268	302	334	367	401	435	468	501	535	568	601
56	1.658	107	143	177	212	249	283	319	355	390	426	463	497	533	568	603	639
57	1.753	112	150	187	225	263	302	339	376	414	450	489	527	563	601	639	676
58	1.848	118	158	198	238	278	317	358	395	435	476	517	555	595	635	674	714



PART 3

SEA PORT AREA DELFZIJL/EEMSHAVEN - INGOING AND OUTGOING VOYAGES (PILOT STATION)

- Pilotage tariffs decision ACM, 5 December 2023  
 - Pilotage tariffs are expressed in euro, exclusive of Dutch VAT

Actual draught (in dm)	S-tariff (starting tariff) in €	T-tariff (route-dependent tariff) in €															
		A, B		A				B									
		TC 1	TC 2	TC 3	TC 4	TC 5	TC 6	TC 7	TC 8	TC 9	TC 10	TC 11	TC 12	TC 13	TC 14	TC 15	TC 16
59	1.946	124	167	209	251	292	334	376	417	459	500	543	585	627	667	710	751
60	2.042	130	174	219	262	306	349	393	437	480	525	568	612	655	699	742	786
61	2.138	137	183	228	275	320	366	411	458	503	549	595	641	687	733	777	824
62	2.234	144	192	239	287	335	382	431	478	527	575	623	669	717	765	813	861
63	2.332	150	199	250	299	349	400	450	499	549	599	649	699	749	799	849	899
64	2.429	157	208	261	311	365	416	468	520	573	625	676	728	781	833	883	936
65	2.524	163	216	270	324	379	433	487	541	595	649	703	757	812	865	920	973
66	2.618	169	224	281	336	392	449	504	561	617	673	729	785	841	898	953	1.009
67	2.723	174	233	292	349	408	466	525	582	641	699	758	816	875	933	991	1.048
68	2.826	181	241	304	364	423	484	544	603	665	725	787	848	909	968	1.028	1.089
69	2.929	186	250	316	377	439	501	563	627	688	751	816	879	941	1.005	1.065	1.128
70	3.033	194	258	325	390	455	519	583	648	713	777	846	910	974	1.039	1.104	1.168
71	3.137	199	267	339	404	470	537	603	669	737	803	875	941	1.008	1.076	1.140	1.206
72	3.236	208	277	346	416	484	554	624	693	761	831	901	969	1.039	1.108	1.178	1.246
73	3.331	213	284	358	429	499	572	642	714	784	856	927	999	1.070	1.141	1.214	1.286
74	3.429	220	293	367	442	515	588	660	736	808	881	955	1.028	1.102	1.175	1.248	1.323
75	3.525	226	303	378	453	529	603	679	755	830	907	982	1.057	1.133	1.207	1.285	1.360
76	3.622	233	310	388	466	543	622	698	776	853	931	1.009	1.086	1.164	1.241	1.319	1.398
77	3.718	239	318	397	478	557	638	716	798	875	956	1.035	1.116	1.195	1.275	1.355	1.435
78	3.812	245	325	408	490	572	653	736	816	898	980	1.061	1.143	1.225	1.306	1.388	1.470
79	3.895	250	334	417	500	583	667	751	835	918	1.003	1.084	1.169	1.251	1.336	1.417	1.502
80	3.980	255	341	428	512	595	683	767	852	937	1.023	1.107	1.193	1.279	1.365	1.449	1.535
81	4.060	261	348	435	521	610	697	784	869	957	1.045	1.130	1.218	1.305	1.394	1.478	1.566
82	4.144	266	356	445	532	622	712	801	887	976	1.067	1.152	1.243	1.332	1.423	1.509	1.599
83	4.227	270	364	455	542	634	727	818	906	997	1.090	1.176	1.269	1.360	1.453	1.539	1.631
84	4.312	277	369	463	554	647	739	831	923	1.017	1.108	1.201	1.293	1.386	1.478	1.570	1.662
85	4.403	282	378	471	566	660	754	849	944	1.036	1.131	1.226	1.320	1.414	1.509	1.604	1.697
86	4.493	290	386	480	577	674	770	867	963	1.058	1.154	1.250	1.347	1.443	1.541	1.636	1.732
87	4.583	295	394	490	589	687	785	883	983	1.079	1.177	1.276	1.375	1.473	1.572	1.670	1.766
88	4.671	303	402	499	600	701	801	902	1.004	1.099	1.200	1.300	1.401	1.502	1.604	1.704	1.799
89	4.762	308	410	507	612	714	816	920	1.022	1.120	1.222	1.326	1.428	1.531	1.635	1.736	1.834
90	4.852	311	416	519	624	728	831	935	1.039	1.143	1.246	1.351	1.454	1.558	1.662	1.767	1.871

PART 3

SEA PORT AREA DELFZIJL/EEMSHAVEN - INGOING AND OUTGOING VOYAGES (PILOT STATION)

- Pilotage tariffs decision ACM, 5 December 2023  
 - Pilotage tariffs are expressed in euro, exclusive of Dutch VAT

Actual draught (in dm)	S-tariff (starting tariff) in €	T-tariff (route-dependent tariff) in €															
		A, B		A	B												
		TC 1	TC 2	TC 3	TC 4	TC 5	TC 6	TC 7	TC 8	TC 9	TC 10	TC 11	TC 12	TC 13	TC 14	TC 15	TC 16
91	4.942	318	423	529	635	741	847	953	1.059	1.164	1.271	1.377	1.482	1.588	1.693	1.799	1.904
92	5.032	324	431	538	646	754	862	970	1.079	1.185	1.293	1.401	1.509	1.617	1.724	1.833	1.940
93	5.122	331	438	548	658	767	877	988	1.098	1.205	1.315	1.426	1.536	1.647	1.757	1.866	1.974
94	5.211	337	445	556	668	782	895	1.007	1.119	1.227	1.339	1.452	1.563	1.675	1.787	1.900	2.008
95	5.300	344	452	566	680	796	910	1.023	1.138	1.246	1.362	1.476	1.590	1.705	1.819	1.933	2.042
96	5.391	346	463	577	693	809	923	1.039	1.154	1.271	1.386	1.501	1.617	1.732	1.847	1.963	2.079
97	5.488	353	470	588	705	823	939	1.058	1.176	1.293	1.411	1.527	1.647	1.764	1.881	1.998	2.115
98	5.583	359	478	598	717	838	957	1.077	1.196	1.315	1.436	1.556	1.675	1.794	1.915	2.034	2.153
99	5.681	366	487	610	730	852	973	1.095	1.217	1.339	1.461	1.582	1.705	1.827	1.948	2.068	2.192
100	5.776	372	494	619	742	867	991	1.115	1.238	1.362	1.486	1.609	1.733	1.857	1.981	2.105	2.227
101	5.874	378	503	630	755	881	1.007	1.133	1.258	1.385	1.510	1.636	1.762	1.888	2.014	2.140	2.265
102	5.970	383	512	639	766	896	1.022	1.150	1.279	1.406	1.534	1.662	1.789	1.918	2.045	2.172	2.302
103	6.015	386	516	644	772	902	1.030	1.159	1.288	1.416	1.545	1.674	1.803	1.932	2.060	2.190	2.319
104	6.058	390	519	649	778	910	1.036	1.168	1.298	1.427	1.557	1.686	1.816	1.946	2.077	2.207	2.336
105	6.104	393	524	654	785	917	1.044	1.176	1.306	1.438	1.568	1.698	1.830	1.961	2.092	2.223	2.354
106	6.147	395	528	659	791	923	1.052	1.184	1.315	1.449	1.578	1.711	1.844	1.976	2.109	2.240	2.372
107	6.194	400	532	665	798	931	1.059	1.192	1.326	1.459	1.592	1.723	1.857	1.990	2.123	2.256	2.389
108	6.238	401	535	667	802	935	1.068	1.203	1.336	1.470	1.604	1.737	1.871	2.003	2.138	2.270	2.406
109	6.290	404	540	673	809	943	1.078	1.214	1.347	1.483	1.617	1.753	1.885	2.020	2.155	2.290	2.424
110	6.341	407	543	679	814	950	1.088	1.224	1.359	1.496	1.630	1.767	1.901	2.038	2.172	2.309	2.444
111	6.393	409	548	684	821	957	1.096	1.233	1.369	1.508	1.645	1.781	1.918	2.053	2.192	2.326	2.465
112	6.446	414	551	688	826	964	1.106	1.244	1.383	1.520	1.658	1.795	1.933	2.069	2.209	2.346	2.485
113	6.496	416	555	693	833	971	1.116	1.254	1.393	1.532	1.670	1.809	1.949	2.087	2.226	2.364	2.505
114	6.547	421	561	701	841	981	1.121	1.262	1.402	1.543	1.682	1.822	1.963	2.102	2.243	2.383	2.523
115	6.599	423	564	708	848	990	1.131	1.273	1.413	1.555	1.696	1.836	1.979	2.120	2.261	2.403	2.543
116	6.651	428	569	712	853	998	1.140	1.283	1.425	1.566	1.709	1.851	1.994	2.137	2.277	2.421	2.563
117	6.703	430	574	716	861	1.007	1.148	1.293	1.437	1.578	1.722	1.866	2.011	2.152	2.297	2.438	2.583
118	6.753	433	577	722	867	1.015	1.159	1.303	1.449	1.593	1.736	1.881	2.026	2.168	2.313	2.458	2.603
119	6.806	435	582	728	872	1.022	1.169	1.314	1.460	1.605	1.750	1.895	2.041	2.185	2.332	2.478	2.624
120	6.854	440	587	736	881	1.028	1.175	1.320	1.467	1.613	1.761	1.906	2.055	2.203	2.349	2.495	2.642
121	6.906	443	590	740	887	1.035	1.184	1.331	1.480	1.626	1.774	1.922	2.072	2.220	2.367	2.515	2.662
122	6.958	446	595	745	895	1.042	1.193	1.342	1.491	1.639	1.787	1.938	2.087	2.236	2.385	2.533	2.682

PART 3

SEA PORT AREA DELFZIJL/EEMSHAVEN - INGOING AND OUTGOING VOYAGES (PILOT STATION)

- Pilotage tariffs decision ACM, 5 December 2023  
 - Pilotage tariffs are expressed in euro, exclusive of Dutch VAT

Actual draught (in dm)	S-tariff (starting tariff) in €	T-tariff (route-dependent tariff) in €															
		A, B		A	B												
		TC 1	TC 2	TC 3	TC 4	TC 5	TC 6	TC 7	TC 8	TC 9	TC 10	TC 11	TC 12	TC 13	TC 14	TC 15	TC 16
123	7.008	450	599	750	900	1.049	1.203	1.353	1.502	1.652	1.802	1.952	2.102	2.252	2.403	2.552	2.701
124	7.061	452	603	755	907	1.057	1.213	1.363	1.513	1.664	1.816	1.967	2.117	2.269	2.420	2.571	2.723
125	7.112	456	607	760	912	1.064	1.221	1.374	1.524	1.676	1.830	1.981	2.135	2.285	2.436	2.590	2.741
126	7.164	460	614	766	921	1.074	1.228	1.381	1.534	1.687	1.841	1.994	2.148	2.302	2.455	2.608	2.761
127	7.215	464	617	771	926	1.082	1.236	1.390	1.545	1.700	1.854	2.010	2.163	2.318	2.472	2.627	2.781
128	7.267	466	623	777	933	1.091	1.244	1.401	1.557	1.711	1.868	2.025	2.178	2.334	2.490	2.645	2.800
129	7.318	470	627	783	938	1.098	1.252	1.412	1.568	1.724	1.881	2.039	2.195	2.351	2.507	2.666	2.819
130	7.370	472	631	787	946	1.107	1.261	1.422	1.578	1.737	1.893	2.053	2.210	2.367	2.526	2.683	2.840
131	7.422	476	635	794	951	1.116	1.270	1.433	1.592	1.750	1.906	2.067	2.225	2.385	2.542	2.701	2.861
132	7.470	479	640	800	960	1.120	1.280	1.439	1.600	1.760	1.920	2.080	2.240	2.401	2.560	2.719	2.880
133	7.547	484	646	809	970	1.132	1.293	1.454	1.617	1.778	1.940	2.102	2.262	2.424	2.587	2.747	2.910
134	7.626	490	652	816	981	1.143	1.306	1.469	1.634	1.795	1.958	2.123	2.285	2.450	2.613	2.776	2.940
135	7.703	494	659	825	992	1.154	1.320	1.484	1.650	1.814	1.979	2.145	2.309	2.475	2.639	2.804	2.970
136	7.781	500	665	833	1.003	1.167	1.334	1.498	1.667	1.831	1.998	2.166	2.332	2.499	2.666	2.833	3.001
137	7.858	505	671	841	1.012	1.178	1.347	1.512	1.683	1.848	2.018	2.189	2.354	2.526	2.690	2.861	3.030
138	7.933	508	679	850	1.020	1.189	1.359	1.528	1.698	1.869	2.039	2.209	2.379	2.547	2.718	2.889	3.058
139	8.023	517	687	859	1.031	1.203	1.375	1.548	1.718	1.889	2.061	2.234	2.406	2.578	2.750	2.921	3.092
140	8.112	523	696	868	1.042	1.216	1.390	1.565	1.738	1.910	2.085	2.259	2.432	2.606	2.781	2.954	3.126
141	8.203	529	704	877	1.054	1.230	1.405	1.582	1.759	1.931	2.109	2.283	2.459	2.637	2.812	2.988	3.161
142	8.293	535	713	887	1.065	1.243	1.421	1.600	1.778	1.952	2.130	2.309	2.486	2.666	2.842	3.021	3.194
143	8.382	541	722	897	1.077	1.256	1.437	1.618	1.797	1.973	2.153	2.333	2.514	2.694	2.875	3.055	3.230
144	8.474	544	727	908	1.089	1.271	1.452	1.634	1.815	1.995	2.177	2.359	2.541	2.723	2.903	3.084	3.266
145	8.551	549	733	916	1.098	1.282	1.465	1.648	1.831	2.014	2.198	2.381	2.563	2.745	2.929	3.112	3.295
146	8.628	554	739	923	1.109	1.293	1.478	1.662	1.847	2.032	2.217	2.403	2.587	2.772	2.957	3.141	3.327
147	8.704	560	745	932	1.119	1.304	1.492	1.676	1.865	2.052	2.237	2.423	2.610	2.797	2.983	3.169	3.356
148	8.783	564	751	939	1.130	1.315	1.506	1.691	1.881	2.069	2.256	2.445	2.631	2.821	3.010	3.196	3.386
149	8.861	570	757	949	1.140	1.328	1.519	1.706	1.897	2.088	2.276	2.467	2.654	2.848	3.037	3.226	3.417
150	8.935	575	765	957	1.146	1.339	1.529	1.721	1.914	2.105	2.297	2.487	2.680	2.870	3.062	3.253	3.443
151	9.013	579	771	966	1.158	1.350	1.544	1.736	1.930	2.123	2.317	2.509	2.701	2.896	3.087	3.281	3.474
152	9.090	585	777	973	1.169	1.362	1.558	1.752	1.946	2.142	2.335	2.531	2.725	2.920	3.113	3.309	3.504
153	9.167	589	784	982	1.179	1.374	1.571	1.766	1.963	2.161	2.355	2.553	2.747	2.946	3.141	3.338	3.535
154	9.245	595	791	991	1.189	1.385	1.584	1.780	1.980	2.179	2.374	2.576	2.770	2.970	3.166	3.366	3.564



PART 3

SEA PORT AREA DELFZIJL/EEMSHAVEN - INGOING AND OUTGOING VOYAGES (PILOT STATION)

- Pilotage tariffs decision ACM, 5 December 2023  
 - Pilotage tariffs are expressed in euro, exclusive of Dutch VAT

Actual draught (in dm)	S-tariff (starting tariff) in €	T-tariff (route-dependent tariff) in €															
		A, B		A				B									
		TC 1	TC 2	TC 3	TC 4	TC 5	TC 6	TC 7	TC 8	TC 9	TC 10	TC 11	TC 12	TC 13	TC 14	TC 15	TC 16
155	9.323	600	798	999	1.200	1.397	1.598	1.794	1.996	2.199	2.395	2.596	2.793	2.995	3.191	3.393	3.595
156	9.397	603	806	1.007	1.207	1.409	1.609	1.811	2.012	2.213	2.416	2.617	2.816	3.018	3.220	3.421	3.622
157	9.474	610	812	1.015	1.218	1.420	1.622	1.827	2.029	2.232	2.434	2.639	2.840	3.044	3.245	3.449	3.652
158	9.551	614	818	1.022	1.229	1.432	1.636	1.841	2.045	2.249	2.455	2.659	2.863	3.068	3.272	3.477	3.682
159	9.629	619	824	1.031	1.239	1.442	1.650	1.855	2.061	2.266	2.474	2.682	2.886	3.092	3.297	3.505	3.713
160	9.707	625	830	1.039	1.249	1.454	1.663	1.870	2.079	2.283	2.493	2.703	2.909	3.118	3.325	3.534	3.744
161	9.783	630	837	1.047	1.260	1.466	1.676	1.884	2.094	2.303	2.514	2.726	2.932	3.143	3.350	3.561	3.773
162	9.858	634	845	1.056	1.268	1.478	1.690	1.900	2.111	2.322	2.533	2.743	2.956	3.167	3.378	3.589	3.801
163	9.937	639	851	1.064	1.278	1.490	1.704	1.915	2.128	2.340	2.553	2.766	2.978	3.191	3.403	3.617	3.831
164	10.013	644	857	1.073	1.288	1.501	1.717	1.929	2.143	2.360	2.573	2.788	3.001	3.217	3.430	3.646	3.860
165	10.090	649	863	1.081	1.299	1.512	1.731	1.943	2.161	2.379	2.592	2.810	3.023	3.242	3.455	3.673	3.891
166	10.169	654	869	1.090	1.308	1.523	1.744	1.957	2.177	2.397	2.613	2.833	3.048	3.267	3.481	3.702	3.921
167	10.247	659	875	1.097	1.319	1.536	1.758	1.973	2.195	2.416	2.631	2.854	3.071	3.291	3.509	3.730	3.951
168	10.322	662	883	1.105	1.327	1.548	1.768	1.989	2.211	2.431	2.652	2.873	3.094	3.316	3.537	3.758	3.979
169	10.398	667	892	1.114	1.337	1.558	1.781	2.003	2.227	2.450	2.673	2.896	3.117	3.341	3.562	3.786	4.009
170	10.476	673	897	1.121	1.347	1.570	1.795	2.018	2.244	2.469	2.691	2.917	3.141	3.366	3.588	3.814	4.039
171	10.554	679	904	1.130	1.357	1.581	1.809	2.032	2.261	2.487	2.711	2.939	3.162	3.390	3.614	3.842	4.069
172	10.631	684	910	1.138	1.368	1.593	1.822	2.047	2.276	2.506	2.730	2.961	3.185	3.415	3.640	3.871	4.099
173	10.709	688	916	1.146	1.379	1.605	1.836	2.061	2.295	2.526	2.750	2.982	3.208	3.440	3.665	3.898	4.129
174	10.783	693	923	1.154	1.386	1.617	1.847	2.079	2.310	2.541	2.772	3.002	3.233	3.464	3.695	3.925	4.156
175	10.860	698	931	1.163	1.397	1.627	1.862	2.093	2.325	2.558	2.792	3.023	3.257	3.489	3.721	3.953	4.186
176	10.939	703	936	1.172	1.406	1.639	1.875	2.109	2.344	2.576	2.811	3.047	3.280	3.514	3.748	3.982	4.216
177	11.017	709	943	1.180	1.416	1.651	1.888	2.123	2.360	2.593	2.830	3.068	3.301	3.539	3.774	4.010	4.248
178	11.094	714	949	1.189	1.427	1.662	1.901	2.137	2.375	2.612	2.851	3.089	3.326	3.564	3.802	4.038	4.277
179	11.171	718	955	1.196	1.438	1.674	1.916	2.151	2.393	2.629	2.870	3.112	3.347	3.589	3.830	4.067	4.307
180	11.245	722	963	1.203	1.445	1.685	1.928	2.166	2.408	2.647	2.890	3.131	3.371	3.612	3.854	4.094	4.335
181	11.323	728	969	1.213	1.455	1.697	1.941	2.182	2.424	2.668	2.910	3.153	3.394	3.637	3.879	4.123	4.365
182	11.402	733	975	1.220	1.466	1.708	1.954	2.197	2.442	2.687	2.929	3.174	3.418	3.662	3.906	4.151	4.395
183	11.478	738	982	1.229	1.476	1.719	1.968	2.211	2.458	2.704	2.950	3.196	3.440	3.688	3.931	4.179	4.424
184	11.555	742	988	1.237	1.487	1.732	1.981	2.225	2.475	2.724	2.969	3.218	3.463	3.712	3.957	4.206	4.457
185	11.632	748	994	1.244	1.497	1.743	1.994	2.240	2.492	2.742	2.989	3.240	3.486	3.736	3.984	4.235	4.486
186	11.706	752	1.004	1.253	1.504	1.756	2.005	2.256	2.507	2.757	3.008	3.259	3.510	3.761	4.011	4.263	4.513

PART 3

SEA PORT AREA DELFZIJL/EEMSHAVEN - INGOING AND OUTGOING VOYAGES (PILOT STATION)

- Pilotage tariffs decision ACM, 5 December 2023  
 - Pilotage tariffs are expressed in euro, exclusive of Dutch VAT

Actual draught (in dm)	S-tariff (starting tariff) in €	T-tariff (route-dependent tariff) in €															
		A, B		A		B											
		TC 1	TC 2	TC 3	TC 4	TC 5	TC 6	TC 7	TC 8	TC 9	TC 10	TC 11	TC 12	TC 13	TC 14	TC 15	TC 16
187	11.785	757	1.009	1.262	1.514	1.767	2.019	2.270	2.523	2.778	3.028	3.281	3.534	3.786	4.038	4.290	4.543
188	11.862	763	1.016	1.271	1.524	1.778	2.032	2.285	2.541	2.796	3.049	3.302	3.555	3.811	4.065	4.318	4.573
189	11.940	767	1.021	1.279	1.536	1.789	2.045	2.300	2.557	2.813	3.068	3.326	3.579	3.835	4.089	4.347	4.604
190	12.017	772	1.028	1.287	1.547	1.801	2.060	2.315	2.575	2.834	3.087	3.346	3.602	3.860	4.116	4.374	4.633
191	12.094	777	1.034	1.295	1.557	1.813	2.074	2.330	2.590	2.852	3.107	3.369	3.624	3.886	4.141	4.402	4.665
192	12.169	783	1.042	1.303	1.564	1.824	2.085	2.346	2.605	2.867	3.128	3.388	3.649	3.910	4.170	4.431	4.690
193	12.322	794	1.056	1.320	1.583	1.847	2.112	2.375	2.639	2.903	3.167	3.431	3.696	3.959	4.222	4.486	4.751
194	12.476	803	1.069	1.337	1.604	1.871	2.139	2.407	2.674	2.940	3.206	3.474	3.743	4.010	4.276	4.543	4.809
195	12.631	813	1.083	1.354	1.622	1.893	2.165	2.436	2.706	2.976	3.245	3.516	3.788	4.059	4.328	4.599	4.869
≥196	12.786	822	1.095	1.369	1.643	1.917	2.192	2.465	2.738	3.011	3.285	3.559	3.833	4.107	4.381	4.655	4.928

PART 3

SEA PORT AREA HARLINGEN/Terschelling - INGOING AND OUTGOING VOYAGES (PILOT STATION)

- Pilotage tariffs decision ACM, 5 December 2023  
 - Pilotage tariffs are expressed in euro, exclusive of Dutch VAT

Actual draught (in dm)	S-tariff (starting tariff) in €	T-tariff (route-dependent tariff) in €															
						A					B					C	
		TC 1	TC 2	TC 3	TC 4	TC 5	TC 6	TC 7	TC 8	TC 9	TC 10	TC 11	TC 12	TC 13	TC 14	TC 15	TC 16
≤27	384	24	33	41	51	58	66	73	83	90	99	108	115	123	131	142	150
28	410	27	36	45	53	61	70	79	87	97	106	114	122	131	142	150	158
29	437	29	38	48	57	66	73	85	94	102	111	122	128	142	150	159	168
30	463	30	39	51	59	70	79	89	99	109	118	128	138	150	158	169	177
31	475	32	40	52	61	72	82	93	101	112	122	131	143	153	163	173	183
32	488	32	41	52	64	73	84	94	106	115	124	136	147	157	167	179	187
33	499	32	42	53	66	75	86	96	108	118	127	138	151	162	171	184	194
34	511	33	44	54	67	78	87	98	111	122	130	143	156	165	174	191	198
35	524	35	45	56	70	81	89	100	114	124	135	145	159	170	179	195	205
36	538	35	46	58	71	82	94	103	115	126	138	150	162	172	185	197	208
37	572	37	49	60	73	87	98	110	122	135	147	159	171	183	197	208	220
38	604	38	52	64	78	93	102	115	128	143	156	169	180	194	208	220	233
39	637	40	56	66	83	97	108	122	137	150	163	177	191	205	220	231	247
40	669	42	59	70	87	101	113	128	145	157	171	186	198	213	231	243	258
41	701	45	61	73	90	108	118	136	152	163	180	197	208	224	243	255	270
42	732	46	62	78	94	109	124	143	157	172	187	205	220	235	251	267	282
43	789	52	67	85	101	116	136	153	170	185	204	220	237	255	270	287	305
44	848	56	73	90	108	125	146	164	182	199	218	237	255	272	290	308	328
45	907	59	78	97	115	135	157	176	195	212	232	255	272	291	310	330	352
46	967	64	84	102	122	143	167	186	207	226	247	270	290	310	331	349	373
47	1.024	67	88	109	128	151	177	198	220	241	261	287	308	330	349	370	395
48	1.078	70	94	115	138	162	185	208	231	255	277	302	323	346	369	392	416
49	1.141	73	98	122	147	171	197	220	245	269	293	318	344	367	391	416	442
50	1.206	78	102	128	156	180	208	233	258	284	310	336	364	388	414	440	466
51	1.269	83	108	137	163	191	220	247	271	302	325	354	382	408	435	464	491
52	1.335	87	113	145	171	198	231	258	284	317	344	372	402	430	456	488	517
53	1.397	90	118	152	180	208	243	270	298	332	360	389	422	450	478	513	541
54	1.463	94	124	157	187	220	251	282	312	345	376	408	439	470	501	533	563
55	1.560	100	133	168	200	234	268	302	334	367	401	435	468	501	535	568	601
56	1.658	107	143	177	212	249	283	319	355	390	426	463	497	533	568	603	639
57	1.753	112	150	187	225	263	302	339	376	414	450	489	527	563	601	639	676
58	1.848	118	158	198	238	278	317	358	395	435	476	517	555	595	635	674	714



PART 3

SEA PORT AREA HARLINGEN/Terschelling - INGOING AND OUTGOING VOYAGES (PILOT STATION)

- Pilotage tariffs decision ACM, 5 December 2023  
 - Pilotage tariffs are expressed in euro, exclusive of Dutch VAT

Actual draught (in dm)	S-tariff (starting tariff) in €	T-tariff (route-dependent tariff) in €															
						A					B					C	
		TC 1	TC 2	TC 3	TC 4	TC 5	TC 6	TC 7	TC 8	TC 9	TC 10	TC 11	TC 12	TC 13	TC 14	TC 15	TC 16
59	1.946	124	167	209	251	292	334	376	417	459	500	543	585	627	667	710	751
60	2.042	130	174	219	262	306	349	393	437	480	525	568	612	655	699	742	786
61	2.138	137	183	228	275	320	366	411	458	503	549	595	641	687	733	777	824
62	2.234	144	192	239	287	335	382	431	478	527	575	623	669	717	765	813	861
63	2.332	150	199	250	299	349	400	450	499	549	599	649	699	749	799	849	899
64	2.429	157	208	261	311	365	416	468	520	573	625	676	728	781	833	883	936
65	2.524	163	216	270	324	379	433	487	541	595	649	703	757	812	865	920	973
66	2.618	169	224	281	336	392	449	504	561	617	673	729	785	841	898	953	1.009
67	2.723	174	233	292	349	408	466	525	582	641	699	758	816	875	933	991	1.048
68	2.826	181	241	304	364	423	484	544	603	665	725	787	848	909	968	1.028	1.089
69	2.929	186	250	316	377	439	501	563	627	688	751	816	879	941	1.005	1.065	1.128
70	3.033	194	258	325	390	455	519	583	648	713	777	846	910	974	1.039	1.104	1.168
71	3.137	199	267	339	404	470	537	603	669	737	803	875	941	1.008	1.076	1.140	1.206
72	3.236	208	277	346	416	484	554	624	693	761	831	901	969	1.039	1.108	1.178	1.246
73	3.331	213	284	358	429	499	572	642	714	784	856	927	999	1.070	1.141	1.214	1.286
74	3.429	220	293	367	442	515	588	660	736	808	881	955	1.028	1.102	1.175	1.248	1.323
75	3.525	226	303	378	453	529	603	679	755	830	907	982	1.057	1.133	1.207	1.285	1.360
76	3.622	233	310	388	466	543	622	698	776	853	931	1.009	1.086	1.164	1.241	1.319	1.398
77	3.718	239	318	397	478	557	638	716	798	875	956	1.035	1.116	1.195	1.275	1.355	1.435
78	3.812	245	325	408	490	572	653	736	816	898	980	1.061	1.143	1.225	1.306	1.388	1.470
79	3.895	250	334	417	500	583	667	751	835	918	1.003	1.084	1.169	1.251	1.336	1.417	1.502
80	3.980	255	341	428	512	595	683	767	852	937	1.023	1.107	1.193	1.279	1.365	1.449	1.535
81	4.060	261	348	435	521	610	697	784	869	957	1.045	1.130	1.218	1.305	1.394	1.478	1.566
82	4.144	266	356	445	532	622	712	801	887	976	1.067	1.152	1.243	1.332	1.423	1.509	1.599
83	4.227	270	364	455	542	634	727	818	906	997	1.090	1.176	1.269	1.360	1.453	1.539	1.631
84	4.312	277	369	463	554	647	739	831	923	1.017	1.108	1.201	1.293	1.386	1.478	1.570	1.662
85	4.403	282	378	471	566	660	754	849	944	1.036	1.131	1.226	1.320	1.414	1.509	1.604	1.697
86	4.493	290	386	480	577	674	770	867	963	1.058	1.154	1.250	1.347	1.443	1.541	1.636	1.732
87	4.583	295	394	490	589	687	785	883	983	1.079	1.177	1.276	1.375	1.473	1.572	1.670	1.766
88	4.671	303	402	499	600	701	801	902	1.004	1.099	1.200	1.300	1.401	1.502	1.604	1.704	1.799
89	4.762	308	410	507	612	714	816	920	1.022	1.120	1.222	1.326	1.428	1.531	1.635	1.736	1.834
90	4.852	311	416	519	624	728	831	935	1.039	1.143	1.246	1.351	1.454	1.558	1.662	1.767	1.871

PART 3

SEA PORT AREA HARLINGEN/Terschelling - INGOING AND OUTGOING VOYAGES (PILOT STATION)

- Pilotage tariffs decision ACM, 5 December 2023  
 - Pilotage tariffs are expressed in euro, exclusive of Dutch VAT

Actual draught (in dm)	S-tariff (starting tariff) in €	T-tariff (route-dependent tariff) in €															
						A					B					C	
		TC 1	TC 2	TC 3	TC 4	TC 5	TC 6	TC 7	TC 8	TC 9	TC 10	TC 11	TC 12	TC 13	TC 14	TC 15	TC 16
91	4.942	318	423	529	635	741	847	953	1.059	1.164	1.271	1.377	1.482	1.588	1.693	1.799	1.904
92	5.032	324	431	538	646	754	862	970	1.079	1.185	1.293	1.401	1.509	1.617	1.724	1.833	1.940
93	5.122	331	438	548	658	767	877	988	1.098	1.205	1.315	1.426	1.536	1.647	1.757	1.866	1.974
94	5.211	337	445	556	668	782	895	1.007	1.119	1.227	1.339	1.452	1.563	1.675	1.787	1.900	2.008
95	5.300	344	452	566	680	796	910	1.023	1.138	1.246	1.362	1.476	1.590	1.705	1.819	1.933	2.042
96	5.391	346	463	577	693	809	923	1.039	1.154	1.271	1.386	1.501	1.617	1.732	1.847	1.963	2.079
97	5.488	353	470	588	705	823	939	1.058	1.176	1.293	1.411	1.527	1.647	1.764	1.881	1.998	2.115
98	5.583	359	478	598	717	838	957	1.077	1.196	1.315	1.436	1.556	1.675	1.794	1.915	2.034	2.153
99	5.681	366	487	610	730	852	973	1.095	1.217	1.339	1.461	1.582	1.705	1.827	1.948	2.068	2.192
100	5.776	372	494	619	742	867	991	1.115	1.238	1.362	1.486	1.609	1.733	1.857	1.981	2.105	2.227
101	5.874	378	503	630	755	881	1.007	1.133	1.258	1.385	1.510	1.636	1.762	1.888	2.014	2.140	2.265
102	5.970	383	512	639	766	896	1.022	1.150	1.279	1.406	1.534	1.662	1.789	1.918	2.045	2.172	2.302
103	6.015	386	516	644	772	902	1.030	1.159	1.288	1.416	1.545	1.674	1.803	1.932	2.060	2.190	2.319
104	6.058	390	519	649	778	910	1.036	1.168	1.298	1.427	1.557	1.686	1.816	1.946	2.077	2.207	2.336
105	6.104	393	524	654	785	917	1.044	1.176	1.306	1.438	1.568	1.698	1.830	1.961	2.092	2.223	2.354
106	6.147	395	528	659	791	923	1.052	1.184	1.315	1.449	1.578	1.711	1.844	1.976	2.109	2.240	2.372
107	6.194	400	532	665	798	931	1.059	1.192	1.326	1.459	1.592	1.723	1.857	1.990	2.123	2.256	2.389
108	6.238	401	535	667	802	935	1.068	1.203	1.336	1.470	1.604	1.737	1.871	2.003	2.138	2.270	2.406
109	6.290	404	540	673	809	943	1.078	1.214	1.347	1.483	1.617	1.753	1.885	2.020	2.155	2.290	2.424
110	6.341	407	543	679	814	950	1.088	1.224	1.359	1.496	1.630	1.767	1.901	2.038	2.172	2.309	2.444
111	6.393	409	548	684	821	957	1.096	1.233	1.369	1.508	1.645	1.781	1.918	2.053	2.192	2.326	2.465
112	6.446	414	551	688	826	964	1.106	1.244	1.383	1.520	1.658	1.795	1.933	2.069	2.209	2.346	2.485
113	6.496	416	555	693	833	971	1.116	1.254	1.393	1.532	1.670	1.809	1.949	2.087	2.226	2.364	2.505
114	6.547	421	561	701	841	981	1.121	1.262	1.402	1.543	1.682	1.822	1.963	2.102	2.243	2.383	2.523
115	6.599	423	564	708	848	990	1.131	1.273	1.413	1.555	1.696	1.836	1.979	2.120	2.261	2.403	2.543
116	6.651	428	569	712	853	998	1.140	1.283	1.425	1.566	1.709	1.851	1.994	2.137	2.277	2.421	2.563
117	6.703	430	574	716	861	1.007	1.148	1.293	1.437	1.578	1.722	1.866	2.011	2.152	2.297	2.438	2.583
118	6.753	433	577	722	867	1.015	1.159	1.303	1.449	1.593	1.736	1.881	2.026	2.168	2.313	2.458	2.603
119	6.806	435	582	728	872	1.022	1.169	1.314	1.460	1.605	1.750	1.895	2.041	2.185	2.332	2.478	2.624
120	6.854	440	587	736	881	1.028	1.175	1.320	1.467	1.613	1.761	1.906	2.055	2.203	2.349	2.495	2.642
121	6.906	443	590	740	887	1.035	1.184	1.331	1.480	1.626	1.774	1.922	2.072	2.220	2.367	2.515	2.662
122	6.958	446	595	745	895	1.042	1.193	1.342	1.491	1.639	1.787	1.938	2.087	2.236	2.385	2.533	2.682

PART 3

SEA PORT AREA HARLINGEN/Terschelling - INGOING AND OUTGOING VOYAGES (PILOT STATION)

- Pilotage tariffs decision ACM, 5 December 2023  
 - Pilotage tariffs are expressed in euro, exclusive of Dutch VAT

Actual draught (in dm)	S-tariff (starting tariff) in €	T-tariff (route-dependent tariff) in €																	
						A		B										C	
		TC 1	TC 2	TC 3	TC 4	TC 5	TC 6	TC 7	TC 8	TC 9	TC 10	TC 11	TC 12	TC 13	TC 14	TC 15	TC 16		
123	7.008	450	599	750	900	1.049	1.203	1.353	1.502	1.652	1.802	1.952	2.102	2.252	2.403	2.552	2.701		
124	7.061	452	603	755	907	1.057	1.213	1.363	1.513	1.664	1.816	1.967	2.117	2.269	2.420	2.571	2.723		
125	7.112	456	607	760	912	1.064	1.221	1.374	1.524	1.676	1.830	1.981	2.135	2.285	2.436	2.590	2.741		
126	7.164	460	614	766	921	1.074	1.228	1.381	1.534	1.687	1.841	1.994	2.148	2.302	2.455	2.608	2.761		
127	7.215	464	617	771	926	1.082	1.236	1.390	1.545	1.700	1.854	2.010	2.163	2.318	2.472	2.627	2.781		
128	7.267	466	623	777	933	1.091	1.244	1.401	1.557	1.711	1.868	2.025	2.178	2.334	2.490	2.645	2.800		
129	7.318	470	627	783	938	1.098	1.252	1.412	1.568	1.724	1.881	2.039	2.195	2.351	2.507	2.666	2.819		
130	7.370	472	631	787	946	1.107	1.261	1.422	1.578	1.737	1.893	2.053	2.210	2.367	2.526	2.683	2.840		
131	7.422	476	635	794	951	1.116	1.270	1.433	1.592	1.750	1.906	2.067	2.225	2.385	2.542	2.701	2.861		
132	7.470	479	640	800	960	1.120	1.280	1.439	1.600	1.760	1.920	2.080	2.240	2.401	2.560	2.719	2.880		
133	7.547	484	646	809	970	1.132	1.293	1.454	1.617	1.778	1.940	2.102	2.262	2.424	2.587	2.747	2.910		
134	7.626	490	652	816	981	1.143	1.306	1.469	1.634	1.795	1.958	2.123	2.285	2.450	2.613	2.776	2.940		
135	7.703	494	659	825	992	1.154	1.320	1.484	1.650	1.814	1.979	2.145	2.309	2.475	2.639	2.804	2.970		
136	7.781	500	665	833	1.003	1.167	1.334	1.498	1.667	1.831	1.998	2.166	2.332	2.499	2.666	2.833	3.001		
137	7.858	505	671	841	1.012	1.178	1.347	1.512	1.683	1.848	2.018	2.189	2.354	2.526	2.690	2.861	3.030		
138	7.933	508	679	850	1.020	1.189	1.359	1.528	1.698	1.869	2.039	2.209	2.379	2.547	2.718	2.889	3.058		
139	8.023	517	687	859	1.031	1.203	1.375	1.548	1.718	1.889	2.061	2.234	2.406	2.578	2.750	2.921	3.092		
140	8.112	523	696	868	1.042	1.216	1.390	1.565	1.738	1.910	2.085	2.259	2.432	2.606	2.781	2.954	3.126		
141	8.203	529	704	877	1.054	1.230	1.405	1.582	1.759	1.931	2.109	2.283	2.459	2.637	2.812	2.988	3.161		
142	8.293	535	713	887	1.065	1.243	1.421	1.600	1.778	1.952	2.130	2.309	2.486	2.666	2.842	3.021	3.194		
143	8.382	541	722	897	1.077	1.256	1.437	1.618	1.797	1.973	2.153	2.333	2.514	2.694	2.875	3.055	3.230		
144	8.474	544	727	908	1.089	1.271	1.452	1.634	1.815	1.995	2.177	2.359	2.541	2.723	2.903	3.084	3.266		
145	8.551	549	733	916	1.098	1.282	1.465	1.648	1.831	2.014	2.198	2.381	2.563	2.745	2.929	3.112	3.295		
146	8.628	554	739	923	1.109	1.293	1.478	1.662	1.847	2.032	2.217	2.403	2.587	2.772	2.957	3.141	3.327		
147	8.704	560	745	932	1.119	1.304	1.492	1.676	1.865	2.052	2.237	2.423	2.610	2.797	2.983	3.169	3.356		
148	8.783	564	751	939	1.130	1.315	1.506	1.691	1.881	2.069	2.256	2.445	2.631	2.821	3.010	3.196	3.386		
149	8.861	570	757	949	1.140	1.328	1.519	1.706	1.897	2.088	2.276	2.467	2.654	2.848	3.037	3.226	3.417		
150	8.935	575	765	957	1.146	1.339	1.529	1.721	1.914	2.105	2.297	2.487	2.680	2.870	3.062	3.253	3.443		
151	9.013	579	771	966	1.158	1.350	1.544	1.736	1.930	2.123	2.317	2.509	2.701	2.896	3.087	3.281	3.474		
152	9.090	585	777	973	1.169	1.362	1.558	1.752	1.946	2.142	2.335	2.531	2.725	2.920	3.113	3.309	3.504		
153	9.167	589	784	982	1.179	1.374	1.571	1.766	1.963	2.161	2.355	2.553	2.747	2.946	3.141	3.338	3.535		
154	9.245	595	791	991	1.189	1.385	1.584	1.780	1.980	2.179	2.374	2.576	2.770	2.970	3.166	3.366	3.564		



PART 3

SEA PORT AREA HARLINGEN/Terschelling - INGOING AND OUTGOING VOYAGES (PILOT STATION)

- Pilotage tariffs decision ACM, 5 December 2023  
 - Pilotage tariffs are expressed in euro, exclusive of Dutch VAT

Actual draught (in dm)	S-tariff (starting tariff) in €	T-tariff (route-dependent tariff) in €																	
						A		B										C	
		TC 1	TC 2	TC 3	TC 4	TC 5	TC 6	TC 7	TC 8	TC 9	TC 10	TC 11	TC 12	TC 13	TC 14	TC 15	TC 16		
155	9.323	600	798	999	1.200	1.397	1.598	1.794	1.996	2.199	2.395	2.596	2.793	2.995	3.191	3.393	3.595		
156	9.397	603	806	1.007	1.207	1.409	1.609	1.811	2.012	2.213	2.416	2.617	2.816	3.018	3.220	3.421	3.622		
157	9.474	610	812	1.015	1.218	1.420	1.622	1.827	2.029	2.232	2.434	2.639	2.840	3.044	3.245	3.449	3.652		
158	9.551	614	818	1.022	1.229	1.432	1.636	1.841	2.045	2.249	2.455	2.659	2.863	3.068	3.272	3.477	3.682		
159	9.629	619	824	1.031	1.239	1.442	1.650	1.855	2.061	2.266	2.474	2.682	2.886	3.092	3.297	3.505	3.713		
160	9.707	625	830	1.039	1.249	1.454	1.663	1.870	2.079	2.283	2.493	2.703	2.909	3.118	3.325	3.534	3.744		
161	9.783	630	837	1.047	1.260	1.466	1.676	1.884	2.094	2.303	2.514	2.726	2.932	3.143	3.350	3.561	3.773		
162	9.858	634	845	1.056	1.268	1.478	1.690	1.900	2.111	2.322	2.533	2.743	2.956	3.167	3.378	3.589	3.801		
163	9.937	639	851	1.064	1.278	1.490	1.704	1.915	2.128	2.340	2.553	2.766	2.978	3.191	3.403	3.617	3.831		
164	10.013	644	857	1.073	1.288	1.501	1.717	1.929	2.143	2.360	2.573	2.788	3.001	3.217	3.430	3.646	3.860		
165	10.090	649	863	1.081	1.299	1.512	1.731	1.943	2.161	2.379	2.592	2.810	3.023	3.242	3.455	3.673	3.891		
166	10.169	654	869	1.090	1.308	1.523	1.744	1.957	2.177	2.397	2.613	2.833	3.048	3.267	3.481	3.702	3.921		
167	10.247	659	875	1.097	1.319	1.536	1.758	1.973	2.195	2.416	2.631	2.854	3.071	3.291	3.509	3.730	3.951		
168	10.322	662	883	1.105	1.327	1.548	1.768	1.989	2.211	2.431	2.652	2.873	3.094	3.316	3.537	3.758	3.979		
169	10.398	667	892	1.114	1.337	1.558	1.781	2.003	2.227	2.450	2.673	2.896	3.117	3.341	3.562	3.786	4.009		
170	10.476	673	897	1.121	1.347	1.570	1.795	2.018	2.244	2.469	2.691	2.917	3.141	3.366	3.588	3.814	4.039		
171	10.554	679	904	1.130	1.357	1.581	1.809	2.032	2.261	2.487	2.711	2.939	3.162	3.390	3.614	3.842	4.069		
172	10.631	684	910	1.138	1.368	1.593	1.822	2.047	2.276	2.506	2.730	2.961	3.185	3.415	3.640	3.871	4.099		
173	10.709	688	916	1.146	1.379	1.605	1.836	2.061	2.295	2.526	2.750	2.982	3.208	3.440	3.665	3.898	4.129		
174	10.783	693	923	1.154	1.386	1.617	1.847	2.079	2.310	2.541	2.772	3.002	3.233	3.464	3.695	3.925	4.156		
175	10.860	698	931	1.163	1.397	1.627	1.862	2.093	2.325	2.558	2.792	3.023	3.257	3.489	3.721	3.953	4.186		
176	10.939	703	936	1.172	1.406	1.639	1.875	2.109	2.344	2.576	2.811	3.047	3.280	3.514	3.748	3.982	4.216		
177	11.017	709	943	1.180	1.416	1.651	1.888	2.123	2.360	2.593	2.830	3.068	3.301	3.539	3.774	4.010	4.248		
178	11.094	714	949	1.189	1.427	1.662	1.901	2.137	2.375	2.612	2.851	3.089	3.326	3.564	3.802	4.038	4.277		
179	11.171	718	955	1.196	1.438	1.674	1.916	2.151	2.393	2.629	2.870	3.112	3.347	3.589	3.830	4.067	4.307		
180	11.245	722	963	1.203	1.445	1.685	1.928	2.166	2.408	2.647	2.890	3.131	3.371	3.612	3.854	4.094	4.335		
181	11.323	728	969	1.213	1.455	1.697	1.941	2.182	2.424	2.668	2.910	3.153	3.394	3.637	3.879	4.123	4.365		
182	11.402	733	975	1.220	1.466	1.708	1.954	2.197	2.442	2.687	2.929	3.174	3.418	3.662	3.906	4.151	4.395		
183	11.478	738	982	1.229	1.476	1.719	1.968	2.211	2.458	2.704	2.950	3.196	3.440	3.688	3.931	4.179	4.424		
184	11.555	742	988	1.237	1.487	1.732	1.981	2.225	2.475	2.724	2.969	3.218	3.463	3.712	3.957	4.206	4.457		
185	11.632	748	994	1.244	1.497	1.743	1.994	2.240	2.492	2.742	2.989	3.240	3.486	3.736	3.984	4.235	4.486		
186	11.706	752	1.004	1.253	1.504	1.756	2.005	2.256	2.507	2.757	3.008	3.259	3.510	3.761	4.011	4.263	4.513		

PART 3

SEA PORT AREA HARLINGEN/TERSCHELLING - INGOING AND OUTGOING VOYAGES (PILOT STATION)

- Pilotage tariffs decision ACM, 5 December 2023  
 - Pilotage tariffs are expressed in euro, exclusive of Dutch VAT

Actual draught (in dm)	S-tariff (starting tariff) in €	T-tariff (route-dependent tariff) in €															
						A					B					C	
		TC 1	TC 2	TC 3	TC 4	TC 5	TC 6	TC 7	TC 8	TC 9	TC 10	TC 11	TC 12	TC 13	TC 14	TC 15	TC 16
187	11.785	757	1.009	1.262	1.514	1.767	2.019	2.270	2.523	2.778	3.028	3.281	3.534	3.786	4.038	4.290	4.543
188	11.862	763	1.016	1.271	1.524	1.778	2.032	2.285	2.541	2.796	3.049	3.302	3.555	3.811	4.065	4.318	4.573
189	11.940	767	1.021	1.279	1.536	1.789	2.045	2.300	2.557	2.813	3.068	3.326	3.579	3.835	4.089	4.347	4.604
190	12.017	772	1.028	1.287	1.547	1.801	2.060	2.315	2.575	2.834	3.087	3.346	3.602	3.860	4.116	4.374	4.633
191	12.094	777	1.034	1.295	1.557	1.813	2.074	2.330	2.590	2.852	3.107	3.369	3.624	3.886	4.141	4.402	4.665
192	12.169	783	1.042	1.303	1.564	1.824	2.085	2.346	2.605	2.867	3.128	3.388	3.649	3.910	4.170	4.431	4.690
193	12.322	794	1.056	1.320	1.583	1.847	2.112	2.375	2.639	2.903	3.167	3.431	3.696	3.959	4.222	4.486	4.751
194	12.476	803	1.069	1.337	1.604	1.871	2.139	2.407	2.674	2.940	3.206	3.474	3.743	4.010	4.276	4.543	4.809
195	12.631	813	1.083	1.354	1.622	1.893	2.165	2.436	2.706	2.976	3.245	3.516	3.788	4.059	4.328	4.599	4.869
≥196	12.786	822	1.095	1.369	1.643	1.917	2.192	2.465	2.738	3.011	3.285	3.559	3.833	4.107	4.381	4.655	4.928



# TARIFF TABLES

BERTH SHIFT VOYAGES

The matrix below explains the tariff structure for regular routes for region North. It shows which tariff table, which S tariff and which T tariff column will be charged.

Sea port area Delfzijl/ Eemshaven			Sea	Sea	A	B	Sea port area Harlingen/ Terschelling		
			Westereems	Borkumrede	Eemshaven	Delfzijl			
					3	6			
Sea	Westereems		S-IN/OUT + TC3						
Sea	Borkumrede		S-IN/OUT + TC3	S-IN/OUT + TC3					
A	Eemshaven	3	S-IN/OUT + TC3 + TC2 (A)	S-IN/OUT + TC3	S-BS + TC1				
B	Delfzijl	6	S-IN/OUT + TC6 + TC2 (A)	S-IN/OUT + TC6	S-BS + TC4	S-BS + TC1			

Sea			S-IN/OUT + TC5					
A	Harlingen	5	S-IN/OUT + TC5	S-BS + TC1				
B	Kornwerderzand	7	S-IN/OUT + TC7	S-BS + TC3	S-BS + TC1			
C	Den Helder	16	S-IN/OUT + TC16	S-BS + TC12	S-BS + TC10	S-BS + TC1		

#### Explanation of colour scheme and used abbreviations:

- Ingoing and outgoing voyages (Pilot Station)
- Berth Shift

**S tariff** = Start tariff

**T tariff** = Route dependent tariff

**IN/OUT** = Ingoing and outgoing voyages (Pilot Station)

**BS** = Berth Shift voyages

**TC** = Tariff Column T tariff

For voyages where the pilot or the pilots embark or disembark at pilot station Westereems, which lies further away, an additional A tariff consisting of 4 extra tariff columns will be charged. This equals to the amount of the second tariff column of the T tariff (based on article 4.5.f of the Registered Pilots Market Supervision Decree).



SEA PORT AREA DELFZIJL/EEMSHAVEN - BERTH SHIFT VOYAGES

- Pilotage tariffs decision ACM, 5 December 2023  
 - Pilotage tariffs are expressed in euro, exclusive of Dutch VAT

Actual draught (in dm)	S-tariff (starting tariff) in €	T-tariff (route-dependent tariff) in €															
		A, B			B												
		TC 1	TC 2	TC 3	TC 4	TC 5	TC 6	TC 7	TC 8	TC 9	TC 10	TC 11	TC 12	TC 13	TC 14	TC 15	TC 16
≤27	62	41	51	58	66	73	83	90	99	108	115	123	131	142	150	157	165
28	65	45	53	61	70	79	87	97	106	114	122	131	142	150	158	168	176
29	69	48	57	66	73	85	94	102	111	122	128	142	150	159	168	177	185
30	73	51	59	70	79	89	99	109	118	128	138	150	158	169	177	187	198
31	74	52	61	72	82	93	101	112	122	131	143	153	163	173	183	194	204
32	77	52	64	73	84	94	106	115	124	136	147	157	167	179	187	198	208
33	79	53	66	75	86	96	108	118	127	138	151	162	171	184	194	205	212
34	82	54	67	78	87	98	111	122	130	143	156	165	174	191	198	209	219
35	84	56	70	81	89	100	114	124	135	145	159	170	179	195	205	213	223
36	88	58	71	82	94	103	115	126	138	150	162	172	185	197	208	220	231
37	93	60	73	87	98	110	122	135	147	159	171	183	197	208	220	233	245
38	97	64	78	93	102	115	128	143	156	169	180	194	208	220	233	247	258
39	103	66	83	97	108	122	137	150	163	177	191	205	220	231	247	261	271
40	108	70	87	101	113	128	145	157	171	186	198	213	231	243	258	274	284
41	112	73	90	108	118	136	152	163	180	197	208	224	243	255	270	287	298
42	118	78	94	109	124	143	157	172	187	205	220	235	251	267	282	297	312
43	127	85	101	116	136	153	170	185	204	220	237	255	270	287	305	321	339
44	138	90	108	125	146	164	182	199	218	237	255	272	290	308	328	345	364
45	149	97	115	135	157	176	195	212	232	255	272	291	310	330	352	369	388
46	158	102	122	143	167	186	207	226	247	270	290	310	331	349	373	393	414
47	168	109	128	151	177	198	220	241	261	287	308	330	349	370	395	417	438
48	173	115	138	162	185	208	231	255	277	302	323	346	369	392	416	439	463
49	183	122	147	171	197	220	245	269	293	318	344	367	391	416	442	465	489
50	193	128	156	180	208	233	258	284	310	336	364	388	414	440	466	491	517
51	202	137	163	191	220	247	271	302	325	354	382	408	435	464	491	518	543
52	211	145	171	198	231	258	284	317	344	372	402	430	456	488	517	543	570
53	223	152	180	208	243	270	298	332	360	389	422	450	478	513	541	569	597
54	235	157	187	220	251	282	312	345	376	408	439	470	501	533	563	595	627
55	250	168	200	234	268	302	334	367	401	435	468	501	535	568	601	635	667
56	266	177	212	249	283	319	355	390	426	463	497	533	568	603	639	674	710
57	280	187	225	263	302	339	376	414	450	489	527	563	601	639	676	714	751
58	295	198	238	278	317	358	395	435	476	517	555	595	635	674	714	753	794

## SEA PORT AREA DELFZIJL/EEMSHAVEN - BERTH SHIFT VOYAGES

- Pilotage tariffs decision ACM, 5 December 2023  
 - Pilotage tariffs are expressed in euro, exclusive of Dutch VAT

Actual draught (in dm)	S-tariff (starting tariff) in €	T-tariff (route-dependent tariff) in €															
		A, B		B													
		TC 1	TC 2	TC 3	TC 4	TC 5	TC 6	TC 7	TC 8	TC 9	TC 10	TC 11	TC 12	TC 13	TC 14	TC 15	TC 16
59	311	209	251	292	334	376	417	459	500	543	585	627	667	710	751	794	835
60	329	219	262	306	349	393	437	480	525	568	612	655	699	742	786	830	873
61	342	228	275	320	366	411	458	503	549	595	641	687	733	777	824	869	916
62	357	239	287	335	382	431	478	527	575	623	669	717	765	813	861	910	957
63	372	250	299	349	400	450	499	549	599	649	699	749	799	849	899	949	999
64	388	261	311	365	416	468	520	573	625	676	728	781	833	883	936	988	1.040
65	404	270	324	379	433	487	541	595	649	703	757	812	865	920	973	1.028	1.082
66	421	281	336	392	449	504	561	617	673	729	785	841	898	953	1.009	1.065	1.121
67	437	292	349	408	466	525	582	641	699	758	816	875	933	991	1.048	1.107	1.165
68	453	304	364	423	484	544	603	665	725	787	848	909	968	1.028	1.089	1.147	1.208
69	469	316	377	439	501	563	627	688	751	816	879	941	1.005	1.065	1.128	1.190	1.252
70	488	325	390	455	519	583	648	713	777	846	910	974	1.039	1.104	1.168	1.231	1.297
71	503	339	404	470	537	603	669	737	803	875	941	1.008	1.076	1.140	1.206	1.274	1.340
72	518	346	416	484	554	624	693	761	831	901	969	1.039	1.108	1.178	1.246	1.315	1.386
73	536	358	429	499	572	642	714	784	856	927	999	1.070	1.141	1.214	1.286	1.355	1.427
74	549	367	442	515	588	660	736	808	881	955	1.028	1.102	1.175	1.248	1.323	1.396	1.469
75	564	378	453	529	603	679	755	830	907	982	1.057	1.133	1.207	1.285	1.360	1.435	1.510
76	580	388	466	543	622	698	776	853	931	1.009	1.086	1.164	1.241	1.319	1.398	1.474	1.552
77	594	397	478	557	638	716	798	875	956	1.035	1.116	1.195	1.275	1.355	1.435	1.513	1.594
78	611	408	490	572	653	736	816	898	980	1.061	1.143	1.225	1.306	1.388	1.470	1.551	1.634
79	625	417	500	583	667	751	835	918	1.003	1.084	1.169	1.251	1.336	1.417	1.502	1.585	1.669
80	637	428	512	595	683	767	852	937	1.023	1.107	1.193	1.279	1.365	1.449	1.535	1.620	1.705
81	652	435	521	610	697	784	869	957	1.045	1.130	1.218	1.305	1.394	1.478	1.566	1.655	1.740
82	664	445	532	622	712	801	887	976	1.067	1.152	1.243	1.332	1.423	1.509	1.599	1.688	1.774
83	679	455	542	634	727	818	906	997	1.090	1.176	1.269	1.360	1.453	1.539	1.631	1.722	1.809
84	693	463	554	647	739	831	923	1.017	1.108	1.201	1.293	1.386	1.478	1.570	1.662	1.756	1.847
85	707	471	566	660	754	849	944	1.036	1.131	1.226	1.320	1.414	1.509	1.604	1.697	1.791	1.885
86	722	480	577	674	770	867	963	1.058	1.154	1.250	1.347	1.443	1.541	1.636	1.732	1.829	1.926
87	737	490	589	687	785	883	983	1.079	1.177	1.276	1.375	1.473	1.572	1.670	1.766	1.865	1.963
88	752	499	600	701	801	902	1.004	1.099	1.200	1.300	1.401	1.502	1.604	1.704	1.799	1.900	2.001
89	767	507	612	714	816	920	1.022	1.120	1.222	1.326	1.428	1.531	1.635	1.736	1.834	1.938	2.040
90	779	519	624	728	831	935	1.039	1.143	1.246	1.351	1.454	1.558	1.662	1.767	1.871	1.975	2.079

## SEA PORT AREA DELFZIJL/EEMSHAVEN - BERTH SHIFT VOYAGES

- Pilotage tariffs decision ACM, 5 December 2023  
 - Pilotage tariffs are expressed in euro, exclusive of Dutch VAT

Actual draught (in dm)	S-tariff (starting tariff) in €	T-tariff (route-dependent tariff) in €															
		A, B			B												
		TC 1	TC 2	TC 3	TC 4	TC 5	TC 6	TC 7	TC 8	TC 9	TC 10	TC 11	TC 12	TC 13	TC 14	TC 15	TC 16
91	794	529	635	741	847	953	1.059	1.164	1.271	1.377	1.482	1.588	1.693	1.799	1.904	2.011	2.116
92	809	538	646	754	862	970	1.079	1.185	1.293	1.401	1.509	1.617	1.724	1.833	1.940	2.047	2.155
93	825	548	658	767	877	988	1.098	1.205	1.315	1.426	1.536	1.647	1.757	1.866	1.974	2.084	2.195
94	840	556	668	782	895	1.007	1.119	1.227	1.339	1.452	1.563	1.675	1.787	1.900	2.008	2.121	2.234
95	856	566	680	796	910	1.023	1.138	1.246	1.362	1.476	1.590	1.705	1.819	1.933	2.042	2.157	2.270
96	865	577	693	809	923	1.039	1.154	1.271	1.386	1.501	1.617	1.732	1.847	1.963	2.079	2.195	2.310
97	880	588	705	823	939	1.058	1.176	1.293	1.411	1.527	1.647	1.764	1.881	1.998	2.115	2.234	2.351
98	895	598	717	838	957	1.077	1.196	1.315	1.436	1.556	1.675	1.794	1.915	2.034	2.153	2.273	2.393
99	909	610	730	852	973	1.095	1.217	1.339	1.461	1.582	1.705	1.827	1.948	2.068	2.192	2.312	2.434
100	925	619	742	867	991	1.115	1.238	1.362	1.486	1.609	1.733	1.857	1.981	2.105	2.227	2.352	2.477
101	941	630	755	881	1.007	1.133	1.258	1.385	1.510	1.636	1.762	1.888	2.014	2.140	2.265	2.392	2.518
102	958	639	766	896	1.022	1.150	1.279	1.406	1.534	1.662	1.789	1.918	2.045	2.172	2.302	2.430	2.556
103	966	644	772	902	1.030	1.159	1.288	1.416	1.545	1.674	1.803	1.932	2.060	2.190	2.319	2.448	2.576
104	971	649	778	910	1.036	1.168	1.298	1.427	1.557	1.686	1.816	1.946	2.077	2.207	2.336	2.466	2.596
105	978	654	785	917	1.044	1.176	1.306	1.438	1.568	1.698	1.830	1.961	2.092	2.223	2.354	2.485	2.616
106	986	659	791	923	1.052	1.184	1.315	1.449	1.578	1.711	1.844	1.976	2.109	2.240	2.372	2.505	2.634
107	993	665	798	931	1.059	1.192	1.326	1.459	1.592	1.723	1.857	1.990	2.123	2.256	2.389	2.522	2.654
108	1.002	667	802	935	1.068	1.203	1.336	1.470	1.604	1.737	1.871	2.003	2.138	2.270	2.406	2.539	2.673
109	1.011	673	809	943	1.078	1.214	1.347	1.483	1.617	1.753	1.885	2.020	2.155	2.290	2.424	2.559	2.694
110	1.019	679	814	950	1.088	1.224	1.359	1.496	1.630	1.767	1.901	2.038	2.172	2.309	2.444	2.581	2.715
111	1.027	684	821	957	1.096	1.233	1.369	1.508	1.645	1.781	1.918	2.053	2.192	2.326	2.465	2.601	2.737
112	1.035	688	826	964	1.106	1.244	1.383	1.520	1.658	1.795	1.933	2.069	2.209	2.346	2.485	2.621	2.759
113	1.043	693	833	971	1.116	1.254	1.393	1.532	1.670	1.809	1.949	2.087	2.226	2.364	2.505	2.642	2.781
114	1.052	701	841	981	1.121	1.262	1.402	1.543	1.682	1.822	1.963	2.102	2.243	2.383	2.523	2.666	2.804
115	1.059	708	848	990	1.131	1.273	1.413	1.555	1.696	1.836	1.979	2.120	2.261	2.403	2.543	2.686	2.826
116	1.067	712	853	998	1.140	1.283	1.425	1.566	1.709	1.851	1.994	2.137	2.277	2.421	2.563	2.706	2.848
117	1.077	716	861	1.007	1.148	1.293	1.437	1.578	1.722	1.866	2.011	2.152	2.297	2.438	2.583	2.727	2.868
118	1.084	722	867	1.015	1.159	1.303	1.449	1.593	1.736	1.881	2.026	2.168	2.313	2.458	2.603	2.747	2.891
119	1.093	728	872	1.022	1.169	1.314	1.460	1.605	1.750	1.895	2.041	2.185	2.332	2.478	2.624	2.768	2.912
120	1.101	736	881	1.028	1.175	1.320	1.467	1.613	1.761	1.906	2.055	2.203	2.349	2.495	2.642	2.789	2.936
121	1.108	740	887	1.035	1.184	1.331	1.480	1.626	1.774	1.922	2.072	2.220	2.367	2.515	2.662	2.810	2.959
122	1.116	745	895	1.042	1.193	1.342	1.491	1.639	1.787	1.938	2.087	2.236	2.385	2.533	2.682	2.830	2.979

## SEA PORT AREA DELFZIJL/EEMSHAVEN - BERTH SHIFT VOYAGES

- Pilotage tariffs decision ACM, 5 December 2023  
 - Pilotage tariffs are expressed in euro, exclusive of Dutch VAT

Actual draught (in dm)	S-tariff (starting tariff) in €	T-tariff (route-dependent tariff) in €															
		A, B		B													
		TC 1	TC 2	TC 3	TC 4	TC 5	TC 6	TC 7	TC 8	TC 9	TC 10	TC 11	TC 12	TC 13	TC 14	TC 15	TC 16
123	1.125	750	900	1.049	1.203	1.353	1.502	1.652	1.802	1.952	2.102	2.252	2.403	2.552	2.701	2.852	3.001
124	1.134	755	907	1.057	1.213	1.363	1.513	1.664	1.816	1.967	2.117	2.269	2.420	2.571	2.723	2.872	3.022
125	1.143	760	912	1.064	1.221	1.374	1.524	1.676	1.830	1.981	2.135	2.285	2.436	2.590	2.741	2.893	3.046
126	1.151	766	921	1.074	1.228	1.381	1.534	1.687	1.841	1.994	2.148	2.302	2.455	2.608	2.761	2.914	3.068
127	1.158	771	926	1.082	1.236	1.390	1.545	1.700	1.854	2.010	2.163	2.318	2.472	2.627	2.781	2.936	3.089
128	1.167	777	933	1.091	1.244	1.401	1.557	1.711	1.868	2.025	2.178	2.334	2.490	2.645	2.800	2.957	3.112
129	1.177	783	938	1.098	1.252	1.412	1.568	1.724	1.881	2.039	2.195	2.351	2.507	2.666	2.819	2.977	3.133
130	1.184	787	946	1.107	1.261	1.422	1.578	1.737	1.893	2.053	2.210	2.367	2.526	2.683	2.840	2.998	3.156
131	1.193	794	951	1.116	1.270	1.433	1.592	1.750	1.906	2.067	2.225	2.385	2.542	2.701	2.861	3.019	3.177
132	1.200	800	960	1.120	1.280	1.439	1.600	1.760	1.920	2.080	2.240	2.401	2.560	2.719	2.880	3.040	3.199
133	1.212	809	970	1.132	1.293	1.454	1.617	1.778	1.940	2.102	2.262	2.424	2.587	2.747	2.910	3.071	3.233
134	1.222	816	981	1.143	1.306	1.469	1.634	1.795	1.958	2.123	2.285	2.450	2.613	2.776	2.940	3.103	3.267
135	1.234	825	992	1.154	1.320	1.484	1.650	1.814	1.979	2.145	2.309	2.475	2.639	2.804	2.970	3.133	3.300
136	1.245	833	1.003	1.167	1.334	1.498	1.667	1.831	1.998	2.166	2.332	2.499	2.666	2.833	3.001	3.165	3.333
137	1.257	841	1.012	1.178	1.347	1.512	1.683	1.848	2.018	2.189	2.354	2.526	2.690	2.861	3.030	3.196	3.367
138	1.273	850	1.020	1.189	1.359	1.528	1.698	1.869	2.039	2.209	2.379	2.547	2.718	2.889	3.058	3.229	3.398
139	1.289	859	1.031	1.203	1.375	1.548	1.718	1.889	2.061	2.234	2.406	2.578	2.750	2.921	3.092	3.265	3.437
140	1.304	868	1.042	1.216	1.390	1.565	1.738	1.910	2.085	2.259	2.432	2.606	2.781	2.954	3.126	3.301	3.475
141	1.318	877	1.054	1.230	1.405	1.582	1.759	1.931	2.109	2.283	2.459	2.637	2.812	2.988	3.161	3.338	3.513
142	1.334	887	1.065	1.243	1.421	1.600	1.778	1.952	2.130	2.309	2.486	2.666	2.842	3.021	3.194	3.374	3.552
143	1.350	897	1.077	1.256	1.437	1.618	1.797	1.973	2.153	2.333	2.514	2.694	2.875	3.055	3.230	3.411	3.591
144	1.361	908	1.089	1.271	1.452	1.634	1.815	1.995	2.177	2.359	2.541	2.723	2.903	3.084	3.266	3.448	3.628
145	1.373	916	1.098	1.282	1.465	1.648	1.831	2.014	2.198	2.381	2.563	2.745	2.929	3.112	3.295	3.479	3.662
146	1.384	923	1.109	1.293	1.478	1.662	1.847	2.032	2.217	2.403	2.587	2.772	2.957	3.141	3.327	3.510	3.696
147	1.396	932	1.119	1.304	1.492	1.676	1.865	2.052	2.237	2.423	2.610	2.797	2.983	3.169	3.356	3.541	3.728
148	1.406	939	1.130	1.315	1.506	1.691	1.881	2.069	2.256	2.445	2.631	2.821	3.010	3.196	3.386	3.572	3.761
149	1.418	949	1.140	1.328	1.519	1.706	1.897	2.088	2.276	2.467	2.654	2.848	3.037	3.226	3.417	3.604	3.796
150	1.437	957	1.146	1.339	1.529	1.721	1.914	2.105	2.297	2.487	2.680	2.870	3.062	3.253	3.443	3.635	3.826
151	1.447	966	1.158	1.350	1.544	1.736	1.930	2.123	2.317	2.509	2.701	2.896	3.087	3.281	3.474	3.665	3.859
152	1.460	973	1.169	1.362	1.558	1.752	1.946	2.142	2.335	2.531	2.725	2.920	3.113	3.309	3.504	3.698	3.893
153	1.470	982	1.179	1.374	1.571	1.766	1.963	2.161	2.355	2.553	2.747	2.946	3.141	3.338	3.535	3.728	3.927
154	1.482	991	1.189	1.385	1.584	1.780	1.980	2.179	2.374	2.576	2.770	2.970	3.166	3.366	3.564	3.760	3.959



SEA PORT AREA DELFZIJL/EEMSHAVEN - BERTH SHIFT VOYAGES

- Pilotage tariffs decision ACM, 5 December 2023  
 - Pilotage tariffs are expressed in euro, exclusive of Dutch VAT

Actual draught (in dm)	S-tariff (starting tariff) in €	T-tariff (route-dependent tariff) in €															
		A, B		B													
		TC 1	TC 2	TC 3	TC 4	TC 5	TC 6	TC 7	TC 8	TC 9	TC 10	TC 11	TC 12	TC 13	TC 14	TC 15	TC 16
155	1.492	999	1.200	1.397	1.598	1.794	1.996	2.199	2.395	2.596	2.793	2.995	3.191	3.393	3.595	3.791	3.993
156	1.508	1.007	1.207	1.409	1.609	1.811	2.012	2.213	2.416	2.617	2.816	3.018	3.220	3.421	3.622	3.823	4.026
157	1.519	1.015	1.218	1.420	1.622	1.827	2.029	2.232	2.434	2.639	2.840	3.044	3.245	3.449	3.652	3.855	4.058
158	1.533	1.022	1.229	1.432	1.636	1.841	2.045	2.249	2.455	2.659	2.863	3.068	3.272	3.477	3.682	3.886	4.092
159	1.543	1.031	1.239	1.442	1.650	1.855	2.061	2.266	2.474	2.682	2.886	3.092	3.297	3.505	3.713	3.917	4.125
160	1.555	1.039	1.249	1.454	1.663	1.870	2.079	2.283	2.493	2.703	2.909	3.118	3.325	3.534	3.744	3.947	4.158
161	1.565	1.047	1.260	1.466	1.676	1.884	2.094	2.303	2.514	2.726	2.932	3.143	3.350	3.561	3.773	3.980	4.192
162	1.583	1.056	1.268	1.478	1.690	1.900	2.111	2.322	2.533	2.743	2.956	3.167	3.378	3.589	3.801	4.011	4.222
163	1.596	1.064	1.278	1.490	1.704	1.915	2.128	2.340	2.553	2.766	2.978	3.191	3.403	3.617	3.831	4.042	4.255
164	1.610	1.073	1.288	1.501	1.717	1.929	2.143	2.360	2.573	2.788	3.001	3.217	3.430	3.646	3.860	4.075	4.290
165	1.623	1.081	1.299	1.512	1.731	1.943	2.161	2.379	2.592	2.810	3.023	3.242	3.455	3.673	3.891	4.105	4.322
166	1.635	1.090	1.308	1.523	1.744	1.957	2.177	2.397	2.613	2.833	3.048	3.267	3.481	3.702	3.921	4.137	4.357
167	1.649	1.097	1.319	1.536	1.758	1.973	2.195	2.416	2.631	2.854	3.071	3.291	3.509	3.730	3.951	4.167	4.389
168	1.657	1.105	1.327	1.548	1.768	1.989	2.211	2.431	2.652	2.873	3.094	3.316	3.537	3.758	3.979	4.200	4.420
169	1.669	1.114	1.337	1.558	1.781	2.003	2.227	2.450	2.673	2.896	3.117	3.341	3.562	3.786	4.009	4.231	4.455
170	1.680	1.121	1.347	1.570	1.795	2.018	2.244	2.469	2.691	2.917	3.141	3.366	3.588	3.814	4.039	4.263	4.486
171	1.692	1.130	1.357	1.581	1.809	2.032	2.261	2.487	2.711	2.939	3.162	3.390	3.614	3.842	4.069	4.293	4.520
172	1.706	1.138	1.368	1.593	1.822	2.047	2.276	2.506	2.730	2.961	3.185	3.415	3.640	3.871	4.099	4.324	4.555
173	1.716	1.146	1.379	1.605	1.836	2.061	2.295	2.526	2.750	2.982	3.208	3.440	3.665	3.898	4.129	4.357	4.586
174	1.733	1.154	1.386	1.617	1.847	2.079	2.310	2.541	2.772	3.002	3.233	3.464	3.695	3.925	4.156	4.388	4.618
175	1.744	1.163	1.397	1.627	1.862	2.093	2.325	2.558	2.792	3.023	3.257	3.489	3.721	3.953	4.186	4.418	4.652
176	1.756	1.172	1.406	1.639	1.875	2.109	2.344	2.576	2.811	3.047	3.280	3.514	3.748	3.982	4.216	4.450	4.684
177	1.767	1.180	1.416	1.651	1.888	2.123	2.360	2.593	2.830	3.068	3.301	3.539	3.774	4.010	4.248	4.480	4.718
178	1.779	1.189	1.427	1.662	1.901	2.137	2.375	2.612	2.851	3.089	3.326	3.564	3.802	4.038	4.277	4.512	4.751
179	1.791	1.196	1.438	1.674	1.916	2.151	2.393	2.629	2.870	3.112	3.347	3.589	3.830	4.067	4.307	4.543	4.784
180	1.806	1.203	1.445	1.685	1.928	2.166	2.408	2.647	2.890	3.131	3.371	3.612	3.854	4.094	4.335	4.575	4.817
181	1.818	1.213	1.455	1.697	1.941	2.182	2.424	2.668	2.910	3.153	3.394	3.637	3.879	4.123	4.365	4.606	4.850
182	1.829	1.220	1.466	1.708	1.954	2.197	2.442	2.687	2.929	3.174	3.418	3.662	3.906	4.151	4.395	4.639	4.883
183	1.841	1.229	1.476	1.719	1.968	2.211	2.458	2.704	2.950	3.196	3.440	3.688	3.931	4.179	4.424	4.669	4.917
184	1.852	1.237	1.487	1.732	1.981	2.225	2.475	2.724	2.969	3.218	3.463	3.712	3.957	4.206	4.457	4.699	4.950
185	1.864	1.244	1.497	1.743	1.994	2.240	2.492	2.742	2.989	3.240	3.486	3.736	3.984	4.235	4.486	4.731	4.983
186	1.879	1.253	1.504	1.756	2.005	2.256	2.507	2.757	3.008	3.259	3.510	3.761	4.011	4.263	4.513	4.765	5.015

## SEA PORT AREA DELFZIJL/EEMSHAVEN - BERTH SHIFT VOYAGES

- Pilotage tariffs decision ACM, 5 December 2023  
 - Pilotage tariffs are expressed in euro, exclusive of Dutch VAT

Actual draught (in dm)	S-tariff (starting tariff) in €	T-tariff (route-dependent tariff) in €															
		A, B			B												
		TC 1	TC 2	TC 3	TC 4	TC 5	TC 6	TC 7	TC 8	TC 9	TC 10	TC 11	TC 12	TC 13	TC 14	TC 15	TC 16
187	1.892	1.262	1.514	1.767	2.019	2.270	2.523	2.778	3.028	3.281	3.534	3.786	4.038	4.290	4.543	4.794	5.048
188	1.903	1.271	1.524	1.778	2.032	2.285	2.541	2.796	3.049	3.302	3.555	3.811	4.065	4.318	4.573	4.827	5.079
189	1.915	1.279	1.536	1.789	2.045	2.300	2.557	2.813	3.068	3.326	3.579	3.835	4.089	4.347	4.604	4.856	5.114
190	1.926	1.287	1.547	1.801	2.060	2.315	2.575	2.834	3.087	3.346	3.602	3.860	4.116	4.374	4.633	4.889	5.148
191	1.938	1.295	1.557	1.813	2.074	2.330	2.590	2.852	3.107	3.369	3.624	3.886	4.141	4.402	4.665	4.919	5.182
192	1.955	1.303	1.564	1.824	2.085	2.346	2.605	2.867	3.128	3.388	3.649	3.910	4.170	4.431	4.690	4.952	5.212
193	1.979	1.320	1.583	1.847	2.112	2.375	2.639	2.903	3.167	3.431	3.696	3.959	4.222	4.486	4.751	5.015	5.280
194	2.003	1.337	1.604	1.871	2.139	2.407	2.674	2.940	3.206	3.474	3.743	4.010	4.276	4.543	4.809	5.076	5.344
195	2.028	1.354	1.622	1.893	2.165	2.436	2.706	2.976	3.245	3.516	3.788	4.059	4.328	4.599	4.869	5.140	5.413
≥196	2.053	1.369	1.643	1.917	2.192	2.465	2.738	3.011	3.285	3.559	3.833	4.107	4.381	4.655	4.928	5.204	5.477

## SEA PORT AREA HARLINGEN/TERSCHELLING - BERTH SHIFT VOYAGES

- Pilotage tariffs decision ACM, 5 December 2023  
 - Pilotage tariffs are expressed in euro, exclusive of Dutch VAT

Actual draught (in dm)	S-tariff (starting tariff) in €	T-tariff (route-dependent tariff) in €															
		A, B, C		B								C		C			
		TC 1	TC 2	TC 3	TC 4	TC 5	TC 6	TC 7	TC 8	TC 9	TC 10	TC 11	TC 12	TC 13	TC 14	TC 15	TC 16
≤27	62	41	51	58	66	73	83	90	99	108	115	123	131	142	150	157	165
28	65	45	53	61	70	79	87	97	106	114	122	131	142	150	158	168	176
29	69	48	57	66	73	85	94	102	111	122	128	142	150	159	168	177	185
30	73	51	59	70	79	89	99	109	118	128	138	150	158	169	177	187	198
31	74	52	61	72	82	93	101	112	122	131	143	153	163	173	183	194	204
32	77	52	64	73	84	94	106	115	124	136	147	157	167	179	187	198	208
33	79	53	66	75	86	96	108	118	127	138	151	162	171	184	194	205	212
34	82	54	67	78	87	98	111	122	130	143	156	165	174	191	198	209	219
35	84	56	70	81	89	100	114	124	135	145	159	170	179	195	205	213	223
36	88	58	71	82	94	103	115	126	138	150	162	172	185	197	208	220	231
37	93	60	73	87	98	110	122	135	147	159	171	183	197	208	220	233	245
38	97	64	78	93	102	115	128	143	156	169	180	194	208	220	233	247	258
39	103	66	83	97	108	122	137	150	163	177	191	205	220	231	247	261	271
40	108	70	87	101	113	128	145	157	171	186	198	213	231	243	258	274	284
41	112	73	90	108	118	136	152	163	180	197	208	224	243	255	270	287	298
42	118	78	94	109	124	143	157	172	187	205	220	235	251	267	282	297	312
43	127	85	101	116	136	153	170	185	204	220	237	255	270	287	305	321	339
44	138	90	108	125	146	164	182	199	218	237	255	272	290	308	328	345	364
45	149	97	115	135	157	176	195	212	232	255	272	291	310	330	352	369	388
46	158	102	122	143	167	186	207	226	247	270	290	310	331	349	373	393	414
47	168	109	128	151	177	198	220	241	261	287	308	330	349	370	395	417	438
48	173	115	138	162	185	208	231	255	277	302	323	346	369	392	416	439	463
49	183	122	147	171	197	220	245	269	293	318	344	367	391	416	442	465	489
50	193	128	156	180	208	233	258	284	310	336	364	388	414	440	466	491	517
51	202	137	163	191	220	247	271	302	325	354	382	408	435	464	491	518	543
52	211	145	171	198	231	258	284	317	344	372	402	430	456	488	517	543	570
53	223	152	180	208	243	270	298	332	360	389	422	450	478	513	541	569	597
54	235	157	187	220	251	282	312	345	376	408	439	470	501	533	563	595	627
55	250	168	200	234	268	302	334	367	401	435	468	501	535	568	601	635	667
56	266	177	212	249	283	319	355	390	426	463	497	533	568	603	639	674	710
57	280	187	225	263	302	339	376	414	450	489	527	563	601	639	676	714	751
58	295	198	238	278	317	358	395	435	476	517	555	595	635	674	714	753	794

## SEA PORT AREA HARLINGEN/TERSCHELLING - BERTH SHIFT VOYAGES

- Pilotage tariffs decision ACM, 5 December 2023  
 - Pilotage tariffs are expressed in euro, exclusive of Dutch VAT

Actual draught (in dm)	S-tariff (starting tariff) in €	T-tariff (route-dependent tariff) in €															
		A, B, C		B				C				C					
		TC 1	TC 2	TC 3	TC 4	TC 5	TC 6	TC 7	TC 8	TC 9	TC 10	TC 11	TC 12	TC 13	TC 14	TC 15	TC 16
59	311	209	251	292	334	376	417	459	500	543	585	627	667	710	751	794	835
60	329	219	262	306	349	393	437	480	525	568	612	655	699	742	786	830	873
61	342	228	275	320	366	411	458	503	549	595	641	687	733	777	824	869	916
62	357	239	287	335	382	431	478	527	575	623	669	717	765	813	861	910	957
63	372	250	299	349	400	450	499	549	599	649	699	749	799	849	899	949	999
64	388	261	311	365	416	468	520	573	625	676	728	781	833	883	936	988	1.040
65	404	270	324	379	433	487	541	595	649	703	757	812	865	920	973	1.028	1.082
66	421	281	336	392	449	504	561	617	673	729	785	841	898	953	1.009	1.065	1.121
67	437	292	349	408	466	525	582	641	699	758	816	875	933	991	1.048	1.107	1.165
68	453	304	364	423	484	544	603	665	725	787	848	909	968	1.028	1.089	1.147	1.208
69	469	316	377	439	501	563	627	688	751	816	879	941	1.005	1.065	1.128	1.190	1.252
70	488	325	390	455	519	583	648	713	777	846	910	974	1.039	1.104	1.168	1.231	1.297
71	503	339	404	470	537	603	669	737	803	875	941	1.008	1.076	1.140	1.206	1.274	1.340
72	518	346	416	484	554	624	693	761	831	901	969	1.039	1.108	1.178	1.246	1.315	1.386
73	536	358	429	499	572	642	714	784	856	927	999	1.070	1.141	1.214	1.286	1.355	1.427
74	549	367	442	515	588	660	736	808	881	955	1.028	1.102	1.175	1.248	1.323	1.396	1.469
75	564	378	453	529	603	679	755	830	907	982	1.057	1.133	1.207	1.285	1.360	1.435	1.510
76	580	388	466	543	622	698	776	853	931	1.009	1.086	1.164	1.241	1.319	1.398	1.474	1.552
77	594	397	478	557	638	716	798	875	956	1.035	1.116	1.195	1.275	1.355	1.435	1.513	1.594
78	611	408	490	572	653	736	816	898	980	1.061	1.143	1.225	1.306	1.388	1.470	1.551	1.634
79	625	417	500	583	667	751	835	918	1.003	1.084	1.169	1.251	1.336	1.417	1.502	1.585	1.669
80	637	428	512	595	683	767	852	937	1.023	1.107	1.193	1.279	1.365	1.449	1.535	1.620	1.705
81	652	435	521	610	697	784	869	957	1.045	1.130	1.218	1.305	1.394	1.478	1.566	1.655	1.740
82	664	445	532	622	712	801	887	976	1.067	1.152	1.243	1.332	1.423	1.509	1.599	1.688	1.774
83	679	455	542	634	727	818	906	997	1.090	1.176	1.269	1.360	1.453	1.539	1.631	1.722	1.809
84	693	463	554	647	739	831	923	1.017	1.108	1.201	1.293	1.386	1.478	1.570	1.662	1.756	1.847
85	707	471	566	660	754	849	944	1.036	1.131	1.226	1.320	1.414	1.509	1.604	1.697	1.791	1.885
86	722	480	577	674	770	867	963	1.058	1.154	1.250	1.347	1.443	1.541	1.636	1.732	1.829	1.926
87	737	490	589	687	785	883	983	1.079	1.177	1.276	1.375	1.473	1.572	1.670	1.766	1.865	1.963
88	752	499	600	701	801	902	1.004	1.099	1.200	1.300	1.401	1.502	1.604	1.704	1.799	1.900	2.001
89	767	507	612	714	816	920	1.022	1.120	1.222	1.326	1.428	1.531	1.635	1.736	1.834	1.938	2.040
90	779	519	624	728	831	935	1.039	1.143	1.246	1.351	1.454	1.558	1.662	1.767	1.871	1.975	2.079



## SEA PORT AREA HARLINGEN/TERSCHELLING - BERTH SHIFT VOYAGES

- Pilotage tariffs decision ACM, 5 December 2023  
 - Pilotage tariffs are expressed in euro, exclusive of Dutch VAT

Actual draught (in dm)	S-tariff (starting tariff) in €	T-tariff (route-dependent tariff) in €															
		A, B, C		B				C				C					
		TC 1	TC 2	TC 3	TC 4	TC 5	TC 6	TC 7	TC 8	TC 9	TC 10	TC 11	TC 12	TC 13	TC 14	TC 15	TC 16
91	794	529	635	741	847	953	1.059	1.164	1.271	1.377	1.482	1.588	1.693	1.799	1.904	2.011	2.116
92	809	538	646	754	862	970	1.079	1.185	1.293	1.401	1.509	1.617	1.724	1.833	1.940	2.047	2.155
93	825	548	658	767	877	988	1.098	1.205	1.315	1.426	1.536	1.647	1.757	1.866	1.974	2.084	2.195
94	840	556	668	782	895	1.007	1.119	1.227	1.339	1.452	1.563	1.675	1.787	1.900	2.008	2.121	2.234
95	856	566	680	796	910	1.023	1.138	1.246	1.362	1.476	1.590	1.705	1.819	1.933	2.042	2.157	2.270
96	865	577	693	809	923	1.039	1.154	1.271	1.386	1.501	1.617	1.732	1.847	1.963	2.079	2.195	2.310
97	880	588	705	823	939	1.058	1.176	1.293	1.411	1.527	1.647	1.764	1.881	1.998	2.115	2.234	2.351
98	895	598	717	838	957	1.077	1.196	1.315	1.436	1.556	1.675	1.794	1.915	2.034	2.153	2.273	2.393
99	909	610	730	852	973	1.095	1.217	1.339	1.461	1.582	1.705	1.827	1.948	2.068	2.192	2.312	2.434
100	925	619	742	867	991	1.115	1.238	1.362	1.486	1.609	1.733	1.857	1.981	2.105	2.227	2.352	2.477
101	941	630	755	881	1.007	1.133	1.258	1.385	1.510	1.636	1.762	1.888	2.014	2.140	2.265	2.392	2.518
102	958	639	766	896	1.022	1.150	1.279	1.406	1.534	1.662	1.789	1.918	2.045	2.172	2.302	2.430	2.556
103	966	644	772	902	1.030	1.159	1.288	1.416	1.545	1.674	1.803	1.932	2.060	2.190	2.319	2.448	2.576
104	971	649	778	910	1.036	1.168	1.298	1.427	1.557	1.686	1.816	1.946	2.077	2.207	2.336	2.466	2.596
105	978	654	785	917	1.044	1.176	1.306	1.438	1.568	1.698	1.830	1.961	2.092	2.223	2.354	2.485	2.616
106	986	659	791	923	1.052	1.184	1.315	1.449	1.578	1.711	1.844	1.976	2.109	2.240	2.372	2.505	2.634
107	993	665	798	931	1.059	1.192	1.326	1.459	1.592	1.723	1.857	1.990	2.123	2.256	2.389	2.522	2.654
108	1.002	667	802	935	1.068	1.203	1.336	1.470	1.604	1.737	1.871	2.003	2.138	2.270	2.406	2.539	2.673
109	1.011	673	809	943	1.078	1.214	1.347	1.483	1.617	1.753	1.885	2.020	2.155	2.290	2.424	2.559	2.694
110	1.019	679	814	950	1.088	1.224	1.359	1.496	1.630	1.767	1.901	2.038	2.172	2.309	2.444	2.581	2.715
111	1.027	684	821	957	1.096	1.233	1.369	1.508	1.645	1.781	1.918	2.053	2.192	2.326	2.465	2.601	2.737
112	1.035	688	826	964	1.106	1.244	1.383	1.520	1.658	1.795	1.933	2.069	2.209	2.346	2.485	2.621	2.759
113	1.043	693	833	971	1.116	1.254	1.393	1.532	1.670	1.809	1.949	2.087	2.226	2.364	2.505	2.642	2.781
114	1.052	701	841	981	1.121	1.262	1.402	1.543	1.682	1.822	1.963	2.102	2.243	2.383	2.523	2.666	2.804
115	1.059	708	848	990	1.131	1.273	1.413	1.555	1.696	1.836	1.979	2.120	2.261	2.403	2.543	2.686	2.826
116	1.067	712	853	998	1.140	1.283	1.425	1.566	1.709	1.851	1.994	2.137	2.277	2.421	2.563	2.706	2.848
117	1.077	716	861	1.007	1.148	1.293	1.437	1.578	1.722	1.866	2.011	2.152	2.297	2.438	2.583	2.727	2.868
118	1.084	722	867	1.015	1.159	1.303	1.449	1.593	1.736	1.881	2.026	2.168	2.313	2.458	2.603	2.747	2.891
119	1.093	728	872	1.022	1.169	1.314	1.460	1.605	1.750	1.895	2.041	2.185	2.332	2.478	2.624	2.768	2.912
120	1.101	736	881	1.028	1.175	1.320	1.467	1.613	1.761	1.906	2.055	2.203	2.349	2.495	2.642	2.789	2.936
121	1.108	740	887	1.035	1.184	1.331	1.480	1.626	1.774	1.922	2.072	2.220	2.367	2.515	2.662	2.810	2.959
122	1.116	745	895	1.042	1.193	1.342	1.491	1.639	1.787	1.938	2.087	2.236	2.385	2.533	2.682	2.830	2.979

## SEA PORT AREA HARLINGEN/Terschelling - BERTH SHIFT VOYAGES

- Pilotage tariffs decision ACM, 5 December 2023  
 - Pilotage tariffs are expressed in euro, exclusive of Dutch VAT

Actual draught (in dm)	S-tariff (starting tariff) in €	T-tariff (route-dependent tariff) in €															
		A, B, C		B				C				C					
		TC 1	TC 2	TC 3	TC 4	TC 5	TC 6	TC 7	TC 8	TC 9	TC 10	TC 11	TC 12	TC 13	TC 14	TC 15	TC 16
123	1.125	750	900	1.049	1.203	1.353	1.502	1.652	1.802	1.952	2.102	2.252	2.403	2.552	2.701	2.852	3.001
124	1.134	755	907	1.057	1.213	1.363	1.513	1.664	1.816	1.967	2.117	2.269	2.420	2.571	2.723	2.872	3.022
125	1.143	760	912	1.064	1.221	1.374	1.524	1.676	1.830	1.981	2.135	2.285	2.436	2.590	2.741	2.893	3.046
126	1.151	766	921	1.074	1.228	1.381	1.534	1.687	1.841	1.994	2.148	2.302	2.455	2.608	2.761	2.914	3.068
127	1.158	771	926	1.082	1.236	1.390	1.545	1.700	1.854	2.010	2.163	2.318	2.472	2.627	2.781	2.936	3.089
128	1.167	777	933	1.091	1.244	1.401	1.557	1.711	1.868	2.025	2.178	2.334	2.490	2.645	2.800	2.957	3.112
129	1.177	783	938	1.098	1.252	1.412	1.568	1.724	1.881	2.039	2.195	2.351	2.507	2.666	2.819	2.977	3.133
130	1.184	787	946	1.107	1.261	1.422	1.578	1.737	1.893	2.053	2.210	2.367	2.526	2.683	2.840	2.998	3.156
131	1.193	794	951	1.116	1.270	1.433	1.592	1.750	1.906	2.067	2.225	2.385	2.542	2.701	2.861	3.019	3.177
132	1.200	800	960	1.120	1.280	1.439	1.600	1.760	1.920	2.080	2.240	2.401	2.560	2.719	2.880	3.040	3.199
133	1.212	809	970	1.132	1.293	1.454	1.617	1.778	1.940	2.102	2.262	2.424	2.587	2.747	2.910	3.071	3.233
134	1.222	816	981	1.143	1.306	1.469	1.634	1.795	1.958	2.123	2.285	2.450	2.613	2.776	2.940	3.103	3.267
135	1.234	825	992	1.154	1.320	1.484	1.650	1.814	1.979	2.145	2.309	2.475	2.639	2.804	2.970	3.133	3.300
136	1.245	833	1.003	1.167	1.334	1.498	1.667	1.831	1.998	2.166	2.332	2.499	2.666	2.833	3.001	3.165	3.333
137	1.257	841	1.012	1.178	1.347	1.512	1.683	1.848	2.018	2.189	2.354	2.526	2.690	2.861	3.030	3.196	3.367
138	1.273	850	1.020	1.189	1.359	1.528	1.698	1.869	2.039	2.209	2.379	2.547	2.718	2.889	3.058	3.229	3.398
139	1.289	859	1.031	1.203	1.375	1.548	1.718	1.889	2.061	2.234	2.406	2.578	2.750	2.921	3.092	3.265	3.437
140	1.304	868	1.042	1.216	1.390	1.565	1.738	1.910	2.085	2.259	2.432	2.606	2.781	2.954	3.126	3.301	3.475
141	1.318	877	1.054	1.230	1.405	1.582	1.759	1.931	2.109	2.283	2.459	2.637	2.812	2.988	3.161	3.338	3.513
142	1.334	887	1.065	1.243	1.421	1.600	1.778	1.952	2.130	2.309	2.486	2.666	2.842	3.021	3.194	3.374	3.552
143	1.350	897	1.077	1.256	1.437	1.618	1.797	1.973	2.153	2.333	2.514	2.694	2.875	3.055	3.230	3.411	3.591
144	1.361	908	1.089	1.271	1.452	1.634	1.815	1.995	2.177	2.359	2.541	2.723	2.903	3.084	3.266	3.448	3.628
145	1.373	916	1.098	1.282	1.465	1.648	1.831	2.014	2.198	2.381	2.563	2.745	2.929	3.112	3.295	3.479	3.662
146	1.384	923	1.109	1.293	1.478	1.662	1.847	2.032	2.217	2.403	2.587	2.772	2.957	3.141	3.327	3.510	3.696
147	1.396	932	1.119	1.304	1.492	1.676	1.865	2.052	2.237	2.423	2.610	2.797	2.983	3.169	3.356	3.541	3.728
148	1.406	939	1.130	1.315	1.506	1.691	1.881	2.069	2.256	2.445	2.631	2.821	3.010	3.196	3.386	3.572	3.761
149	1.418	949	1.140	1.328	1.519	1.706	1.897	2.088	2.276	2.467	2.654	2.848	3.037	3.226	3.417	3.604	3.796
150	1.437	957	1.146	1.339	1.529	1.721	1.914	2.105	2.297	2.487	2.680	2.870	3.062	3.253	3.443	3.635	3.826
151	1.447	966	1.158	1.350	1.544	1.736	1.930	2.123	2.317	2.509	2.701	2.896	3.087	3.281	3.474	3.665	3.859
152	1.460	973	1.169	1.362	1.558	1.752	1.946	2.142	2.335	2.531	2.725	2.920	3.113	3.309	3.504	3.698	3.893
153	1.470	982	1.179	1.374	1.571	1.766	1.963	2.161	2.355	2.553	2.747	2.946	3.141	3.338	3.535	3.728	3.927
154	1.482	991	1.189	1.385	1.584	1.780	1.980	2.179	2.374	2.576	2.770	2.970	3.166	3.366	3.564	3.760	3.959

SEA PORT AREA HARLINGEN/TERSCHELLING - BERTH SHIFT VOYAGES

- Pilotage tariffs decision ACM, 5 December 2023  
 - Pilotage tariffs are expressed in euro, exclusive of Dutch VAT

Actual draught (in dm)	S-tariff (starting tariff) in €	T-tariff (route-dependent tariff) in €															
		A, B, C		B								C		C			
		TC 1	TC 2	TC 3	TC 4	TC 5	TC 6	TC 7	TC 8	TC 9	TC 10	TC 11	TC 12	TC 13	TC 14	TC 15	TC 16
155	1.492	999	1.200	1.397	1.598	1.794	1.996	2.199	2.395	2.596	2.793	2.995	3.191	3.393	3.595	3.791	3.993
156	1.508	1.007	1.207	1.409	1.609	1.811	2.012	2.213	2.416	2.617	2.816	3.018	3.220	3.421	3.622	3.823	4.026
157	1.519	1.015	1.218	1.420	1.622	1.827	2.029	2.232	2.434	2.639	2.840	3.044	3.245	3.449	3.652	3.855	4.058
158	1.533	1.022	1.229	1.432	1.636	1.841	2.045	2.249	2.455	2.659	2.863	3.068	3.272	3.477	3.682	3.886	4.092
159	1.543	1.031	1.239	1.442	1.650	1.855	2.061	2.266	2.474	2.682	2.886	3.092	3.297	3.505	3.713	3.917	4.125
160	1.555	1.039	1.249	1.454	1.663	1.870	2.079	2.283	2.493	2.703	2.909	3.118	3.325	3.534	3.744	3.947	4.158
161	1.565	1.047	1.260	1.466	1.676	1.884	2.094	2.303	2.514	2.726	2.932	3.143	3.350	3.561	3.773	3.980	4.192
162	1.583	1.056	1.268	1.478	1.690	1.900	2.111	2.322	2.533	2.743	2.956	3.167	3.378	3.589	3.801	4.011	4.222
163	1.596	1.064	1.278	1.490	1.704	1.915	2.128	2.340	2.553	2.766	2.978	3.191	3.403	3.617	3.831	4.042	4.255
164	1.610	1.073	1.288	1.501	1.717	1.929	2.143	2.360	2.573	2.788	3.001	3.217	3.430	3.646	3.860	4.075	4.290
165	1.623	1.081	1.299	1.512	1.731	1.943	2.161	2.379	2.592	2.810	3.023	3.242	3.455	3.673	3.891	4.105	4.322
166	1.635	1.090	1.308	1.523	1.744	1.957	2.177	2.397	2.613	2.833	3.048	3.267	3.481	3.702	3.921	4.137	4.357
167	1.649	1.097	1.319	1.536	1.758	1.973	2.195	2.416	2.631	2.854	3.071	3.291	3.509	3.730	3.951	4.167	4.389
168	1.657	1.105	1.327	1.548	1.768	1.989	2.211	2.431	2.652	2.873	3.094	3.316	3.537	3.758	3.979	4.200	4.420
169	1.669	1.114	1.337	1.558	1.781	2.003	2.227	2.450	2.673	2.896	3.117	3.341	3.562	3.786	4.009	4.231	4.455
170	1.680	1.121	1.347	1.570	1.795	2.018	2.244	2.469	2.691	2.917	3.141	3.366	3.588	3.814	4.039	4.263	4.486
171	1.692	1.130	1.357	1.581	1.809	2.032	2.261	2.487	2.711	2.939	3.162	3.390	3.614	3.842	4.069	4.293	4.520
172	1.706	1.138	1.368	1.593	1.822	2.047	2.276	2.506	2.730	2.961	3.185	3.415	3.640	3.871	4.099	4.324	4.555
173	1.716	1.146	1.379	1.605	1.836	2.061	2.295	2.526	2.750	2.982	3.208	3.440	3.665	3.898	4.129	4.357	4.586
174	1.733	1.154	1.386	1.617	1.847	2.079	2.310	2.541	2.772	3.002	3.233	3.464	3.695	3.925	4.156	4.388	4.618
175	1.744	1.163	1.397	1.627	1.862	2.093	2.325	2.558	2.792	3.023	3.257	3.489	3.721	3.953	4.186	4.418	4.652
176	1.756	1.172	1.406	1.639	1.875	2.109	2.344	2.576	2.811	3.047	3.280	3.514	3.748	3.982	4.216	4.450	4.684
177	1.767	1.180	1.416	1.651	1.888	2.123	2.360	2.593	2.830	3.068	3.301	3.539	3.774	4.010	4.248	4.480	4.718
178	1.779	1.189	1.427	1.662	1.901	2.137	2.375	2.612	2.851	3.089	3.326	3.564	3.802	4.038	4.277	4.512	4.751
179	1.791	1.196	1.438	1.674	1.916	2.151	2.393	2.629	2.870	3.112	3.347	3.589	3.830	4.067	4.307	4.543	4.784
180	1.806	1.203	1.445	1.685	1.928	2.166	2.408	2.647	2.890	3.131	3.371	3.612	3.854	4.094	4.335	4.575	4.817
181	1.818	1.213	1.455	1.697	1.941	2.182	2.424	2.668	2.910	3.153	3.394	3.637	3.879	4.123	4.365	4.606	4.850
182	1.829	1.220	1.466	1.708	1.954	2.197	2.442	2.687	2.929	3.174	3.418	3.662	3.906	4.151	4.395	4.639	4.883
183	1.841	1.229	1.476	1.719	1.968	2.211	2.458	2.704	2.950	3.196	3.440	3.688	3.931	4.179	4.424	4.669	4.917
184	1.852	1.237	1.487	1.732	1.981	2.225	2.475	2.724	2.969	3.218	3.463	3.712	3.957	4.206	4.457	4.699	4.950
185	1.864	1.244	1.497	1.743	1.994	2.240	2.492	2.742	2.989	3.240	3.486	3.736	3.984	4.235	4.486	4.731	4.983
186	1.879	1.253	1.504	1.756	2.005	2.256	2.507	2.757	3.008	3.259	3.510	3.761	4.011	4.263	4.513	4.765	5.015

## SEA PORT AREA HARLINGEN/TERSCHELLING - BERTH SHIFT VOYAGES

- Pilotage tariffs decision ACM, 5 December 2023  
 - Pilotage tariffs are expressed in euro, exclusive of Dutch VAT

Actual draught (in dm)	S-tariff (starting tariff) in €	T-tariff (route-dependent tariff) in €															
		A, B, C			B							C			C		
		TC 1	TC 2	TC 3	TC 4	TC 5	TC 6	TC 7	TC 8	TC 9	TC 10	TC 11	TC 12	TC 13	TC 14	TC 15	TC 16
187	1.892	1.262	1.514	1.767	2.019	2.270	2.523	2.778	3.028	3.281	3.534	3.786	4.038	4.290	4.543	4.794	5.048
188	1.903	1.271	1.524	1.778	2.032	2.285	2.541	2.796	3.049	3.302	3.555	3.811	4.065	4.318	4.573	4.827	5.079
189	1.915	1.279	1.536	1.789	2.045	2.300	2.557	2.813	3.068	3.326	3.579	3.835	4.089	4.347	4.604	4.856	5.114
190	1.926	1.287	1.547	1.801	2.060	2.315	2.575	2.834	3.087	3.346	3.602	3.860	4.116	4.374	4.633	4.889	5.148
191	1.938	1.295	1.557	1.813	2.074	2.330	2.590	2.852	3.107	3.369	3.624	3.886	4.141	4.402	4.665	4.919	5.182
192	1.955	1.303	1.564	1.824	2.085	2.346	2.605	2.867	3.128	3.388	3.649	3.910	4.170	4.431	4.690	4.952	5.212
193	1.979	1.320	1.583	1.847	2.112	2.375	2.639	2.903	3.167	3.431	3.696	3.959	4.222	4.486	4.751	5.015	5.280
194	2.003	1.337	1.604	1.871	2.139	2.407	2.674	2.940	3.206	3.474	3.743	4.010	4.276	4.543	4.809	5.076	5.344
195	2.028	1.354	1.622	1.893	2.165	2.436	2.706	2.976	3.245	3.516	3.788	4.059	4.328	4.599	4.869	5.140	5.413
≥196	2.053	1.369	1.643	1.917	2.192	2.465	2.738	3.011	3.285	3.559	3.833	4.107	4.381	4.655	4.928	5.204	5.477



## CALCULATION EXAMPLES FOR THE REGION NORTH

### I. PILOT STATION (INGOING VIA BORKUM ROADS)

- From Sea Borkum roads to Julianahaven
- Tariff area A Tariff column 3
- Actual Draught 55 dm.

#### Calculation:

S tariff Pilot Station 55 dm.	€ 1.560,-
T tariff column 3 55 dm.	€ 168,-
<b>Total:</b>	<b>€ 1.728,-</b>

### III. BERTH SHIFT

- From Julianahaven Tariff area A tariff column 3
- To Nieuwe Handelskade Tariff area B tariff column 6
- Actual Draught 55 dm.

#### Calculation:

S tariff Berth shift 55 dm.	€ 250,-
Calculation T-tariff: (TC6 - TC3) + TC1 = TC4	
T tariff column 4 55 dm.	€ 268,-
<b>Total:</b>	<b>€ 518,-</b>

### II. PILOT STATION (INGOING VIA WESTEREEMS)

- From Sea Westereems to Julianahaven
- Tariff area A Tariff column 3
- Actual Draught 70 dm.

#### Calculation:

S tariff Pilot Station 70 dm.	€ 3.033,-
T tariff column 3 70 dm.	€ 325,-
A tariff art. 4.5.f BMR longer route (TC2)	€ 258,-
<b>Total:</b>	<b>€ 3.616,-</b>



# ADDITIONAL TARIFFS

## 4. ADDITIONAL TARIFFS

### 4.1 CALCULATION PILOTAGE TARIFFS

#### **Article 4.8 Registered Pilots Market Supervision Decree establishing a new pilotage tariff structure (introduction pilotage tariff structure 2014).**

1. For all voyages for which pilotage services are rendered, an S tariff and a T tariff are payable. The height of the tariff depends on the draught of the ship or the special transport, and on the type of voyage. In addition to the S and T tariffs there may be an A tariff and pilot expense reimbursements payable. This will be the case in situations as referred to in articles 4.5 and 4.6 of the Registered Pilots Market Supervision Decree.
2. A voyage during which pilotage is interrupted for a period of less than 6 hours, either because the ship is going at anchor during the voyage, or without going at anchor, is stopped without having reached her destination, and without persons or goods leaving or arriving on board, will be counted as one voyage.
3. Without prejudice to the provisions in section one, when the services of more than two registered pilots are used simultaneously during rendezvous voyages, 42.85% of the applicable T and A tariffs for that pilotage voyage are payable for the use of each extra pilot.
4. Without prejudice to the provisions in section one, when the services of more than one registered pilot are used simultaneously during an ingoing, outgoing or berth shift voyage, 75% of the applicable T and A tariffs for that pilotage voyage are payable for the use of each extra pilot.
5. Should a situation arise as described in article 4.6 of the Registered Pilots Market Supervision Decree, section one, subsection a, then contrary to the provisions of the first section of article 4.8, there will be no S and T tariff charged, but only the pilot expense reimbursement mentioned in article 4.6 section one.
6. Contrary to the provisions of section one, sentence one, ingoing and outgoing voyages of ships registered in the Register Pilotage Small Seagoing Vessels as referred to in article 6, section one, of the Compulsory Pilotage Decree 1995, who are only subject to pilotage at sea and who do not receive pilotage services on board their ship, the S tariff for berth shift voyages and the first column of the T tariff for berth shift voyages will be charged.

## 4.2 T-SPECIAL TARIFF

### **(Article 4.4 Registered Pilots Market Supervision Decree, Pilotage tariffs decision for 2024, Authority for Consumers and Markets, ACM).**

For the following situations a T special tariff is laid down:

- a. when a ship or a special transport planned for an ingoing, outgoing or rendezvous voyage ends up staying at sea, without persons or goods leaving or arriving on board: the first tariff column of the T tariff of the sea port area to which the ship or special transport had been underway;
- b. when a ship or a special transport makes an ingoing, outgoing or rendezvous voyage from sea to an anchorage area or another location at sea: the first tariff column of the T tariff of the seaport area to whose management area the anchorage concerned belongs;
- c. if pilotage service is rendered for a berth shift voyage: the tariff column of that T tariff which is the result of the deduction of the tariff column of the tariff area from which the ship or special transport departs and the tariff column to which it is underway, plus one column; and
- d. if pilotage service is rendered for a trial trip of a ship: the time, rounded to the nearest next half hour which the pilotage service has taken, multiplied by the amount of the basic T tariff.

- d. when during pilotage service compass adjustment takes place: the extra time, rounded to the nearest next half hour which the pilotage service has taken, multiplied by the amount of the basic T tariff;
- e. when the pilot stays on board to keep anchor watch or to keep watch on the bridge when the ship is stopped without lying at anchor: the time, rounded to the nearest next half hour which the pilotage service has taken, multiplied by half of the amount of the basic T tariff;
- f. in circumstances when during an ingoing, outgoing or rendezvous voyage a longer than the shortest possible route is taken: the extra time normally involved in taking the longer route, in which for every 20 minute-period the difference between the first and the second tariff column of the applicable T tariff is charged once;
- g. in circumstances when during a berth shift voyage a longer than the shortest possible route is taken: for each additional tariff column covered, the difference between the first and the second tariff column of the applicable T tariff is charged once, while for a route at sea six extra tariff columns are charged;

### **(Article 4.5 Registered Pilots Market Supervision Decree, Pilotage tariffs decision for 2024, Authority for Consumers and Markets, ACM).**

For the following additional services an A tariff is laid down:

- a. when pilotage service is rendered for a ship which, according to the competent authority, cannot be adequately controlled: one time the T tariff payable pursuant to article 4.8;
- b. when pilotage service is rendered for a special transport: one time the T tariff payable pursuant to article 4.8;
- c. when according to the competent authority pilotage service is severely hampered due to floating ice: one time the T tariff payable pursuant to article 4.8;



**Calculation rules for those cases in which a pilotage voyage will have more than one special situation or additional service:**

1. The pilotage tariff surcharges are applied in the order of the articles of this chapter, on the understanding that the surcharges are not cumulative except when a longer than the shortest possible route is taken. When during a pilotage voyage a longer than the shortest possible route is taken (articles 4.5f and 4.5g Registered Pilots Market Supervision Decree), and there are also other particulars (articles 4.4 and 4.5 Registered Pilots Market Supervision Decree), the normal T and A tariffs for the longer route are counted up, on the result of which the surcharges are calculated and added.
2. The provisions of this chapter with regard to the liability to pay the pilotage tariffs according to the S, T and A tariffs do not affect the liability to pay the pilot expense reimbursements.

**Calculation rules for rounding off:**

1. If by applying one of the articles mentioned, the pilotage tariff will result in an amount with decimals, the amount will be rounded to whole euros, whereby amounts of 50 cents or more will be rounded up and amounts less than 50 cents will be rounded down.
2. If more than one of the aforementioned articles apply, the rounding off referred to in the first section will not take place until after the last calculation.

### 4.3 PILOT EXPENSE REIMBURSEMENTS

**(Article 4.6 Registered Pilots Market Supervision Decree, Pilotage tariffs decision for 2024, Authority for Consumers and Markets, ACM).**

The tariff of a pilot expense reimbursement may consist of a lump sum or an hourly rate or in the case of part g of actual costs. A pilot expense reimbursement always, with the exception of the situation referred to in section f, refers to the reimbursement per pilot.

For the covering of costs made by the pilot, and for the time not spent on rendering pilotage services, pilot expense reimbursements have been laid down, which apply in the following situations:

**4.6.1.a. When a pilot is cancelled, or when no use is made of the services of a pilot who has been ordered, a distinction is made between ingoing voyages and ingoing rendezvous voyages on the one hand, and outgoing voyages, outgoing rendezvous voyages and berth shift voyages on the other hand.**

If a pilot who had been ordered, is cancelled, or if the pilot has to return without having been able to render his services, either because the voyage was postponed, or because the ship, without waiting for the arrival of the pilot, had already left before the time the pilot could have been on board: € 402,- for ingoing voyages and ingoing rendezvous voyages. For outgoing voyages, outgoing rendezvous voyages and berth shift voyages € 219,-. A change in exit point of an outbound vessel (on request of the operator or captain) after the first pilot has embarked, will result in an extra cost of € 219,-.

#### 4.6.1.b. Delay during the pilotage voyage to be attributed to the ship or the special transport and not to meteorological or nautical circumstances.

If a delay is experienced of more than half an hour after the time the pilot had to be on board for departure of the ship: € 118,- for each hour, whereby the time concerned is rounded to the next near half hour.

The foregoing also applies if a pilot change has taken place during the pilotage voyage, and this pilotage voyage is not continued within the time of half an hour thereafter. The foregoing also applies to each delay of more than half an hour during the pilotage voyage.

Delay	From (in minutes)	Until (in minutes)	To invoice (in hours)	Amount (in €)
0>1 hr	0	30	-	-
	31	45	0,50	59
	46	60	0,50	59
1>2 hr	61	75	0,50	59
	76	90	1,00	118
	91	105	1,00	118
	106	120	1,50	177
2>3 hr	121	135	1,50	177
	136	150	2,00	236
	151	165	2,00	236
	166	180	2,50	295
3>4 hr	181	195	2,50	295
	196	210	3,00	354
	211	225	3,00	354
	226	240	3,50	413
4>5 hr	241	255	3,50	413
	256	270	4,00	472
	271	285	4,00	472
	286	300	4,50	531
5>6 hr	301	315	4,50	531
	316	330	5,00	590
	331	345	5,00	590
	346	360	5,50	649

#### 4.6.1.c. To keep the pilot on board before commencement and after completion of the Pilotage service.

If the captain wishes to keep the pilot on board before commencement, or before the next, or after the completion of the pilotage service, and the pilot stays on board for more than half an hour, compensation will be charged of € 118,- for each hour, whereby the time concerned is rounded to the next near half hour.

#### 4.6.1.d. To embark or disembark a pilot on a location which is not the customary location for that particular seaport area.

If a captain wishes to embark a pilot at a location other than the customary location for that voyage and for that seaport area: € 1.415,- for the first 12 hours and € 945,- for the next periods of 12 hours or part thereof, counted from the time on which the pilot has left the customary place from which he commences his pilotage services, until the time at which the ship he is piloting has arrived at the location from which the captain, in normal circumstances could have embarked a pilot irrespective of the fact whether pilotage service has been rendered or could have been rendered at sea.

If a pilot is not disembarked at a location other than the customary location for that voyage, but is taken to sea by the captain, irrespective of the fact whether pilotage service is rendered or can be rendered at sea. € 1.415,- for the first 12 hours and € 945,- for the next periods of 12 hours or part thereof, counted from the time of passing the customary embarkation location, until the time of his return on the customary location from which he commences his pilotage services.

#### 4.6.1.e. Quarantine after pilotage service on an infected ship.

If a pilot, due to embarkment of an infected ship, has been observed or hospitalized on the shore: € 1.415,- for the first 12 hours and € 945,- for the next period of 12 hours or part thereof counted from the time on which the pilot has been hospitalized, plus all costs arising from this hospitalization.

**4.6.1.f. Using a helicopter for embarking or disembarking of one or more pilots with rendezvous voyages or on request of the captain.**

On request, Loodswezen can provide helicopter service for the Northern region, depending on the availability. The helicopter costs are at the expense of the ship and therefore not included.

*Disclaimer; no rights may be derived from this in any manner.*

**4.6.1.g. Travelling and accommodation expenses outside the relevant sea port area.**

For this pilot expense reimbursement the actual travelling and accommodation expenses will be charged.

**4.4 DIRECT DEBIT**

A payment discount of 0.85% is granted on the sum of the pilotage tariffs, frequency discount, factors for specific pilot trips and pilotage fees, if a debtor has granted an authorisation for direct debit of all invoices for pilotage tariffs within an average of 7 days after the invoice date. The payment discount is rounded off to whole euros.

**4.5 VAT**

All tariff calculations and tariff tables of the pilotage tariffs and other tariffs of Nederlands Loodswezen as included in the (revised) 2024 tariff proposal and in this Tariff Decision are amounts excluding Value Added Tax. In situations in which, as from 2019, the zero percent VAT rate may no longer be applied, the set tariffs will be increased by the statutory VAT rate.





# TARIFFS TRANSPORT OF PERSONS



5. TARIFFS TRANSPORT OF PERSONS	EUR (excl. 21% VAT)	
	per pilotage voyage - tender (each half an hour)	extra voyage - tender (each half an hour)
1 person	162	446
2 persons	176	446
3 persons	191	446
4 persons	204	446
5 persons	218	446
6 persons	234	446
7 persons	248	446
8 persons	264	446
parcels > 25 kg, per parcel	35	446

*N.B.: - An extra voyage will only be possible if it does not hinder the operations of Nederlands Loodswezen.*

*- Parcels or letters will not be transported from ship to shore unless accompanied by the ship's agent.*



# QUANTITY DISCOUNT

## 6. QUANTITY DISCOUNT

### 6.1 INTRODUCTION

This document contains definitions, conditions and regulations (e.g. sister ships, clusters, etc.) as settled by the Registered Pilots Oversight Decree (Besluit markttoezicht Registerloodsen) and conditions as determined on July 11, 2017 by The Board of the Dutch Maritime Pilots' Corporation (Nederlandse Loodsencorporatie) on the frequency discount on pilotage tariffs.

This information is an extract in English of the regulations on quantity discount. In case of any dispute on the granting of the quantity discount, only the official Dutch version of the regulations and conditions as stated in the Registered Pilots Market Supervision Decree ("Besluit markttoezicht registerloodsen"), and other formal regulations and conditions and decisions by the ACM or the courts will be applicable and binding. The Dutch version of the Besluit markttoezicht registerloodsen is available at [wetten.overheid.nl](http://wetten.overheid.nl) and the regulations can be downloaded from our website.

### 6.2 QUANTITY DISCOUNT ON THE PILOTAGE TARIFFS

The Besluit Markttoezicht Registerloodsen, hereinafter referred to as BMR, lays down the rules for the quantity discount on the pilotage tariffs. Nederlands Loodswezen B.V., designated thereto under article 15a, second paragraph, of the Scheepvaartverkeerswet (Dutch Shipping Traffic Act), grants discount on the pilotage tariffs on the basis of article 4.9, of the BMR. The quantity discount on the pilotage tariffs is expressed as a percentage and calculated over the appropriate S, T and A tariffs per seaport area. The percentage scheme is determined by the Netherlands Authority for Consumers and Markets (ACM) on the basis of article 4.7 of the BMR.

A quantity discount can be granted in the following cases:

- a. To an individual ship, if that ship achieves the frequency in calls indicated in the scheme within one calendar year;
- b. To a cluster of sister ships or a consortium, if that cluster or consortium achieves the frequency in calls indicated in the scheme within one calendar year.

### 6.3 OBJECTIVE OF THE QUANTITY DISCOUNT

The objective of the quantity discount on the pilotage tariffs is to bring about cost savings for shipowners or consortiums (also called alliances) that often or relatively often call at the same port, seaport or seaport area and, in doing so, must always make use of a registered pilot. Granting quantity discount creates a tariff that meets the wishes of the shipping industry and the ports to reduce the costs of the use of a registered pilot for ships and shipowners often or relatively often calling at the same port, seaport or seaport area.

The quantity discount on the pilotage tariffs applies to individual ships as well as to clusters of sister ships. 'A cluster of sister ships', in this context, is understood to mean ships that in relation to each other comply with the following requirements:

- Similar type according to Lloyd's Register of Ships;
- Differences with respect to length over all, maximum draught on the Summer Load Line, and maximum breadth may not be more than 10%, 15% and 20% respectively.

The differences in dimensions are determined on the basis of the differences in relation to the ship with the largest dimensions in the cluster.

The quantity discount on the pilotage tariffs also applies to a consortium (or alliance). A consortium (or alliance) means two or more sister ships that form part of a joint venture operating ships which, on the basis of a regular service schedule, call at the same predetermined Dutch port or seaport. At any given time, a ship may form part of not more than one cluster or consortium (or alliance).

#### 6.4 QUANTITY DISCOUNT IS APPLIED PER SEAPORT AREA

The quantity discount on the pilotage tariffs is applied per seaport area and is determined on the basis of the number of calls of the individual ships or of the individual ships that are part of a cluster of sister ships.

In article 1.1, of the BMR, a call is defined as an ingoing and an outgoing voyage in the same seaport area.

The BMR defines the following seaport areas:

- Delfzijl-Eemshaven;
- Harlingen-Terschelling;
- Den Helder-Den Oever-Oudeschild;
- Amsterdam-IJmuiden;
- Rotterdam-Rijnmond including Dordrecht, Moerdijk and Scheveningen; and
- Scheldemonden.

The fairways subject to compulsory pilotage are defined in the Scheepvaartverkeerswet. For each seaport area the quantity discount must be applied for separately with the relevant regional office of Nederlands Loodswezen B.V. The applicant remains fully responsible to timely submit a correct and complete application for each seaport area separately. In addition, the applicant must demonstrate that it is entitled or authorized to make the application.

#### 6.5 APPLICATION FOR QUANTITY DISCOUNT

The Application Form can be requested or downloaded via our website [www.loodswezen.nl](http://www.loodswezen.nl). An application is only taken into consideration after all necessary and valid documents mentioned in the Application Form have been submitted to the relevant regional office of Nederlands Loodswezen B.V.

The application for quantity discount on the pilotage tariffs is not taken into consideration if the information supplied is insufficient or incomplete for the evaluation of the application.

#### 6.6 GRANTING OF THE QUANTITY DISCOUNT

Quantity discount on the pilotage tariffs is only granted if all requirements are met. The discount is implemented as from 1 January of the calendar year in which the application (or modification) is submitted.

Nederlands Loodswezen B.V. supplies the shipowner or the consortium (or alliance) that receives payment of the quantity discount with three interim quarterly statements and a final statement. The interim quarterly statements specify which ships and which clusters have been registered by the administrative department of Nederlands Loodswezen B.V. and which amount of quantity discount will be paid over the period concerned.



It is the applicant's task to check the correctness of the registered information and to inform Nederlands Loodswezen B.V. of any corrections or modifications as soon as possible but at least before 31 December of the calendar year concerned. The final settlement of the total amount of quantity discount on the pilotage tariffs is determined at the end of the calendar year concerned on the basis of that year's actual number of calls.

If Nederlands Loodswezen B.V. is of the opinion that the shipowner or the consortium (or alliance) has demonstrated that in all cases it meets the minimum frequency requirement in calls, the discount can be subtracted from the invoiced pilotage tariff on the basis of advance payment. Even though the discount is granted on the basis of advance payment, the final settlement at the end of the calendar year concerned will always be determined on the basis of that year's actual information.

Once a ship, a cluster of sister ships, or a consortium (or alliance) has been granted quantity discount, it will also be granted quantity discount in the following year without the need to submit a new application - provided that the requirements are still being met and on the understanding that all the provisions with regard to the final settlement on the basis of the actual number of calls in that calendar year remain in force. Nederlands Loodswezen B.V. may always request further information for the purpose of granting quantity discount.

### 6.7 REJECTION OF THE APPLICATION FOR QUANTITY DISCOUNT

Applications for quantity discount for individual ships, clusters of sister ships, or consortia that are submitted later than 31 December and refer to the then previous calendar year are rejected. Modifications or corrections to existing clusters of sister ships or consortia that are made later than 31 December are not taken into consideration and therefore not included in the calculation of the quantity discount for the then previous calendar year.

## 6.8 DETERMINATION OF THE NUMBER OF CALLS

The height of the quantity discount is determined by the percentage related to the number of calls per calendar year per individual ship, or the number of calls per calendar year per cluster. In view of the objective of the quantity discount on the pilotage tariffs, the number of calls is determined by taking into account only those voyages where actual use is made of the services of a registered pilot.

A call is defined as a combination of an ingoing voyage (i.e. from sea to a seaport area) under pilotage and an outgoing voyage (i.e. from the same seaport area to sea) under pilotage. The number of calls on which the discount percentage is based is calculated per seaport area. Calls made in different seaport areas are therefore not added together. The following calculation rules apply for the determination of the number of calls per calendar year:

### 6.8.1 Individual ships

The number of calls of individual ships on which the discount percentage is based is equal to the actual number of calls made in the calendar year concerned.

### 6.8.2 Unmodified cluster

The actual numbers of calls made by the combined ships in a registered cluster of sister ships in the calendar year concerned are added together. The corresponding percentage of quantity discount on the pilotage tariffs is then calculated over the relevant voyages per ship.

### 6.8.3 New cluster

If a cluster of sister ships is started during the course of the calendar year (i.e. not commencing on 1 January), the number of calls on which the discount percentage is based is calculated by extrapolating the actual number of calls made in that calendar year with retroactive effect to 1 January of the current calendar year.

### 6.8.4 Discontinued cluster

If a cluster of sister ships (not being a consortium or alliance) is discontinued during the current calendar year (i.e. before 31 December), the number of calls on which the discount percentage is based is equal to the actual number of calls made during that calendar year. 'Discontinued' is understood to mean the situation where the cluster of sister ships concerned no longer calls at the relevant seaport area.

### 6.8.5 Unmodified consortium

The actual numbers of calls made by the combined ships in a registered consortium (or alliance) in the calendar year concerned are added together. The corresponding percentage of quantity discount on the pilotage tariffs is then calculated over the relevant voyages per ship.

### 6.8.6 New consortium

If a consortium (or alliance) is started during the course of the calendar year (i.e. not commencing on 1 January), the number of calls on which the discount percentage is based is calculated by extrapolating the actual number of calls made in that calendar year with retroactive effect to 1 January of the current calendar year.

### 6.8.7 Discontinued consortium

If a consortium (or alliance) is discontinued during the current calendar year (i.e. not with effect from 31 December) other than through administrative reform of the consortia (or alliances), the number of calls on which the discount percentage is based is equal to the actual number of calls made during that calendar year. 'Discontinued' is understood to mean the situation where the consortium (or alliance) concerned no longer calls at the relevant seaport area.

### 6.8.8 Administrative reform of consortia

If existing consortia (or alliances) are administratively reformed, ships from discontinued clusters are placed in newly formed clusters and continue to call at Dutch ports in a regular liner service for the rest of the calendar year concerned. In that case, the number of calls on which the quantity discount of the discontinued consortium (or alliance) is based is calculated by extrapolating to a full calendar year the actual number of calls made in the calendar year concerned until 31 December. This way, a discontinued cluster will be allocated the discount percentage it would have received if the cluster had remained intact for the entire calendar year.

## 6.9 MATRIX FREQUENCY DISCOUNT

In accordance with the provisions in article 4.7, section 2 of the Decree amending the Registered Pilots Oversight Decree, the organisation designated pursuant to article 15a, section two of the Shipping Traffic Act, will give a discount in accordance with a scheme laid down under a decision of the Board.

Further details with regard to the provisions of the quantity discount are granted in article 4.9 of the Decree amending the Registered Pilots Oversight Decree.

The overview applicable to the scheme of the quantity discount is given below. In this scheme is included the discount percentage granted on the S and T tariffs and the A tariff according to length and category of ship against a certain number of calls on a yearly basis.

Matrix frequency discount per 1-1-2024

Length Overall Ships in meters:	81,00-120,99	121,00-160,99	161,00-200,99	201,00-240,99	241,00-280,99	281,00-320,99	321,00-360,99	≥361
<b>Call on yearly basis:</b>								
< 18	-	-	-	-	-	-	-	-
18-36	-	-	-	9%	16%	17%	17%	17%
37-48	-	-	-	11%	18%	19%	19%	19%
49-60	-	-	7%	13%	20%	21%	21%	21%
61-72	-	5%	9%	15%	22%	23%	23%	23%
73-84	5%	5%	11%	17%	25%	27%	27%	27%
85-96	5%	7%	13%	19%	27%	29%	29%	29%
97-108	7%	9%	15%	21%	29%	31%	31%	31%
109-120	9%	11%	17%	24%	31%	33%	33%	33%
121-132	11%	13%	19%	26%	33%	35%	35%	35%
133-144	13%	15%	21%	28%	36%	38%	38%	38%
145-156	15%	17%	23%	28%	36%	38%	38%	38%
157-168	17%	19%	25%	28%	36%	38%	38%	38%
169-180	19%	21%	25%	28%	36%	38%	38%	38%
>180	20%	22%	25%	28%	36%	38%	38%	38%

## 6.10 REGISTERED PILOTS OVERSIGHT DECREE

### Article 1.1.

In this Decree and all provisions made pursuant thereto, the following terms shall mean:

**A tariff:** tariff for additional services as referred to in article 4.5.

**Competent authority:** the designated authority for a waterway or part thereof pursuant to article 1, under a, of the Compulsory Pilotage Decree 1995.

**Special transport:** that which, pursuant to article 1, section five, of the Shipping Traffic Act, is also meant by a ship or a sea-going ship and which, under or pursuant to article 4 of that same Act is meant by a special transport.

**Call:** a combination of an ingoing and outgoing voyage in the same seaport area.

**Cluster of sister ships:** two or more sister ships which are operated by the same natural or legal person.

**Consortium:** two or more sister ships, which are part of a joint venture between several natural or legal persons by which the ships are operated on the basis of a regular service schedule, which has been announced in the way as is customary for the sector, and whereby the ships call at a predetermined seaport area.

**Draft:** maximum draft of a ship or a special transport during the pilotage voyage, specified in decimetres, whereby more than a half decimetre is rounded up, and whereby an increase in draft due to unforeseen damages or an accident, or a temporary increase in draft for the benefit of the system for taking cargo on board, or a temporary increase in draft directly resulting from the purpose for which the special transport is carried out, shall not be taken into account.

**Quantity discount:** a discount on the pilotage tariffs as referred to in article 4.9.

**Ingoing voyage:** a voyage with a ship or a special transport for the purpose of which pilotage services are rendered:

- a. from sea to anchorage berth at sea in an anchorage area or another location; or
- b. from sea or from a berth in an anchorage area at sea or another location, to the berth in a seaport area.

**Pilotage services:** the services of a registered pilot as referred to in article 2, section one and two, of the Dutch Pilots Act.

**Reimbursements for pilots:** reimbursements covering the costs involved with the situations mentioned in article 4.6, section one.

**Organisation:** the organisation designated pursuant to article 15a, section two of the Shipping Traffic Act.

**Rendezvous voyage:** an ingoing or outgoing voyage for the purpose of which the service of a pilot commences or ends at a designated location at sea appointed by the competent authority in or near the approach channel to the seaport area concerned.

**S tariff:** starting tariff as referred to in article 4.3, section three.

**Ship:** a ship as referred to in article 1, section one, subsection b of the Shipping Traffic Act, or a sea-going ship as referred to in article 1, section 2, subsection c of that same Act, or that which is considered equal to or excepted from it, pursuant to article 1, section three, subsection three of that Act.

**T special tariff:** T tariff with regard to situations as referred to in article 4.4.

**T tariff:** route-dependent tariff as referred to in article 4.3, section four.

**Outgoing voyage:** a voyage with a ship or a special transport for the purpose of which pilotage services are rendered:

- a. from a berth in an anchorage area at sea or another location, to sea; or
- b. from a berth in a seaport area to sea or to a berth in an anchorage area at sea or another location.

**Berth shift voyage:** a voyage with a ship or a special transport for the purpose of which pilotage services are rendered, not being an ingoing or outgoing voyage.

**Act:** Dutch Pilots Act.

**Sea:** the North Sea, the Wadden Sea, including the entrance to the Eems, the Ranzelgat and the Dukegate, and the entrance to the Western Scheldt, including Flushing Roads.

**Seaport area:** the seaport area of Delfzijl-Eemshaven, Harlingen-Terschelling, Den Helder-Den Oever-Oudeschild, Amsterdam-IJmuiden, Rotterdam-Rijnmond, including Dordrecht, Moerdijk and Scheveningen, or Scheldemonden.

**Sister ships:** ships that in relation to each other comply with the following requirements:

1. similar type in accordance with Lloyd's Register of Ships;
2. a difference in length over all, maximum draft on the summer load line, and a maximum width of not more than respectively 10%, 15% en 20%;

#### Article 4.7.

1. The Authority for Consumers and Markets lays down the S, T, T special, and A tariffs, including the reimbursements for pilots, and including the calculation rules for those voyages on behalf of which several additional services are rendered as referred to in article 4.5.
2. Without prejudice to the provisions in section one, the Authority for Consumers and Markets lays down a scheme for giving quantity discounts to:
  - a. individual ships, if these ships, within one calendar year, manage to obtain the frequency in calls specified in the scheme;
  - b. a cluster of sister ships, or a consortium, if that cluster or consortium manages to obtain the frequency in calls specified in the scheme;

### § 3 The invoicing of pilotage tariffs and quantity discount

#### Artikel 4.9

1. The organisation gives a quantity discount, based on the total sum of S, T and T special tariffs that are charged in one calendar year at the expense of a ship, a cluster of ships, or a consortium as referred to in article 4.7, section two.
2. A ship cannot be simultaneously part of more than one cluster of sister ships or more than one consortium.
3. The quantity discount will be granted after an application has been submitted to the organisation via the application form supplied for that purpose.



1. The applicant will demonstrate plausibly that the ship, the cluster of sister ships, or the consortium, complies or will comply in any case with the minimum frequency in calls as referred to in article 4.7, section two.
2. The discount will be granted from the first day of the calendar year in which the application was submitted and, as long as the requirements in section three are met, they will be subtracted on an advance basis from the invoiced amount.
3. The final account of the quantity discount will be settled at the end of the calendar year mentioned and set off against any advance payments.
4. A ship, a cluster of sister ships, or a consortium which were granted quantity discount in the period before 1 January 2014, or were granted quantity discount pursuant to section two, will continue to be granted quantity discount for as long as the requirements in section three are met, without the necessity of submitting new applications every time, as referred to in section two.
5. The organisation may request further particulars with regard to giving quantity discount.

This information is an extract in English of the regulations on quantity discount. In case of any dispute on the granting of the quantity discount, only the official Dutch version of the regulations and conditions as stated in the Registered Pilots Market Supervision Decree (“Besluit markttoezicht registerloodsen”), and other formal regulations and conditions and decisions by the ACM or the courts will be applicable and binding.

## 6.11 OTHER INFORMATION

### 6.11.1 Seaport areas

#### Article 3a. Tariff areas and tariff columns

1. In order to determine the T tariff as referred to in article 4.3 of the Registered Pilots Oversight Decree in more detail, the seaport areas are subdivided in tariff areas in accordance with Annex 1 of this regulation.
2. The tariff areas referred to in section one, are subdivided into tariff columns in accordance with Annex 2 of this regulation.

ANNEX 1, AS REFERRED TO IN ARTICLE 1, PART A (ANNEX 1 TO ARTICLE 3A, SECTION ONE, REGISTERED PILOTS OVERSIGHT REGULATIONS)

**1. Seaport area Delfzijl-Eemshaven:**

**Tariff area Eems A:** Eemshaven. The navigable part of the Eems, situated south of a line through the following coordinates: 53° 28.5'N / 006° 40'E and 53° 29'N / 007° 01'E; and north of a line through the following coordinates: 53° 24'N / 006° 53'E and 53° 24'N / 007° 01'E.

**Tariff area Eems B:** Delfzijl. The navigable part of the Eems, situated south of a line through the following coordinates: 53° 24'N / 006° 53'E and 53° 24'N / 007° 01'E.

**2. Seaport area Harlingen-Terschelling:**

**Tariff area Harlingen A:** Harlingen. The navigable part, situated south of a line through the following coordinates: 53° 12'N / 005° 06'E and 53° 20'N / 005° 27'E; and northeast of a line through the following coordinates: 53° 12'N / 005° 06'E and 53° 08'N / 005° 25'E.

**Tariff area Harlingen B:** Kornwerderzand. The navigable part, situated south of a line through the following coordinates: 53° 12'N / 005° 06'E and 53° 08'N / 005° 25'E; and east of a line through the following coordinates: 52° 54'N / 004° 50'E and 53° 01'N / 004° 48'E.

**Tariff area Harlingen C:** Den Helder. The navigable part west of the western boundary mentioned in Tariff area Harlingen B.

**3. Seaport area Den Helder-Den Oever- Oudeschild**

**Tariff area Den Helder A:** The Port of Den Helder, including the ports and the Wadden Sea north of 53° 00'N and west of 004° 53'E.

**Tariff area Den Helder B:** The ports and the Wadden Sea south of 53° 00'N and east of 004° 53'E.

**Tariff area Den Helder C:** The ports and the Wadden Sea north of 53° 00'N and east of 004° 53'E, excluding the Port of Harlingen.

**Tariff area Den Helder D:** The Port of Harlingen.

**4. Seaport area Amsterdam-IJmuiden**

**Tariff area Amsterdam-IJmuiden A:** the ports and the navigable area between the meridian of 004°34'E and the locks, including Seaport Marina.

**Tariff area Amsterdam-IJmuiden B:** that part of the North Sea Canal and the harbours that lie between the locks and kilometre 7, including the locks

**Tariff area Amsterdam-IJmuiden C:** that part of the North Sea Canal and the harbours that lie between kilometre 7 and kilometre 14.

**Tariff area Amsterdam-IJmuiden D:** that part of the North Sea Canal and the harbours that lie between kilometre 14 and kilometre 19.

**Tariff area Amsterdam-IJmuiden E:** that part of the North Sea Canal and the harbours that lie between kilometre 19 and the parallel of 52° 23.3'N.

**Tariff area Amsterdam-IJmuiden F:** that part of the IJ and the harbours that lie south of the parallel of 52° 23.3'N.

**Tariff area Amsterdam-IJmuiden D:** that part of the North Sea Canal and the harbours that lie between kilometre 14 and kilometre 19.

**Tariff area Amsterdam-IJmuiden E:** that part of the North Sea Canal and the harbours that lie between kilometre 19 and the parallel of 52° 23.3'N.

**Tariff area Amsterdam-IJmuiden F:** that part of the IJ and the harbours that lie south of the parallel of 52° 23.3'N.

**5. Seaport area Rotterdam-Rijnmond including Dordrecht, Moerdijk and Scheveningen**

**Tariff area Rotterdam-Rijnmond A:** Maasvlakte. The area including:

- the Maas entrance, bounded on the east side by the meridian of 004° 06.4'E;
- the Beerkanaal, bounded on the east side by the meridian of 004° 06.4'E;
- the Calandkanaal, bounded on the east side by the meridian of 004° 06.4'E;
- the Hartelkanaal, bounded on the east side by the meridian of 004° 06.4'E;
- the New Waterway, bounded on the east side by the meridian of 004° 06.4'E;
- the Yangtzekanaal, bounded on the west side by the meridian of 004° 01.0'E, including the berths on the north bank of the Yangtzekanaal.

**Tariff area Rotterdam-Rijnmond B:** Europoort. The area including:

- the Calandkanaal and adjoining harbour basins bounded on the west side by the meridian of 004° 06.4'E, and on the east side by 004° 15.6'E;
- the Hartelkanaal and adjoining harbour basins bounded on the west side by the meridian of 004° 06.4'E, and on the east side by 004° 15.6'E;
- the New Waterway and adjoining harbour basins bounded on the west side by the meridian of 004° 06.4'E, and on the east side by 004° 15.6'E.

**Tariff area Rotterdam-Rijnmond C:** Botlek. The area including:

- the New Waterway and adjoining harbour basins bounded on the west side by the meridian of 004° 15.6'E, and on the east side by 004° 23.2'E;
- the Botlek and adjoining harbour basins bounded on the west side by the meridian of 004° 15.6'E;
- the Hartelkanaal and adjoining harbour basins bounded on the west side by the meridian of 004° 06.4'E, and on the east side by 004° 23.2'E;
- the Oude Maas and adjoining harbour basins bounded on the west side by the meridian of 004° 15.6'E, and on the east side by 004° 23.2'E;
- the Nieuwe Maas and adjoining harbour basins bounded on the west side by the meridian of 004° 15.6'E, and on the east side by 004° 23.2'E.

**Tariff area Rotterdam-Rijnmond D:** Stad (the City).

The area including:

- the Nieuwe Maas and adjoining harbour basins bounded on the west side by the meridian of 004° 23.2'E, and on the east side by 004° 33.3'E;
- Tariff area Rotterdam-Rijnmond E: Upstream of the bridges. The area including:
- the Nieuwe Maas, bounded on the west side by the meridian of 004° 33.3'E;
- the Hollandsche IJssel, bounded on the west side by the meridian of 004° 33.3'E.

**Tariff area Rotterdam-Rijnmond F:** Dordrecht and its environs.

The area including:

- the Lek;
- the Noord;
- the Beneden Merwede;

- the Oude Maas, bounded on the west side by the meridian of 004° 23.2'E;
- the Spui, bounded on the west side by the meridian of 004° 20'E;
- the Dordtse Kil, bounded on the south side by the parallel of 51° 47.0'N.

**Tariff area Rotterdam-Rijnmond G:** Moerdijk and its environs.

The area including:

- the Dordtse Kil, bounded on the north side by the parallel of 51° 47.0'N;
- the Spui, bounded on the east side by the meridian of 004° 20'E;
- the Haringvliet, bounded on the east side by the meridian of 004° 04.5'E;
- the Zijpe, bounded on the west side by the meridian of 004° 04.5'E;
- the Volkerak;
- the Hollands Diep;
- the Amer;
- the Nieuwe Merwede;
- the Scheldt-Rhine Canal.
- the Hollands Diep;
- the Amer;
- the Nieuwe Merwede;
- the Scheldt-Rhine Canal.

**Tariff area Rotterdam-Rijnmond H:** Zeeland.

The area including:

- the Haringvliet, bounded on the east side by the meridian of 004° 04.5'E;
- the Zijpe, bounded on the east side by the meridian of 004° 04.5'E;
- the Eastern Scheldt, bounded on the east side by the meridian of 001° 04.5'E;
- The Slijkgat.

**Tariff area Rotterdam-Rijnmond I:** Scheveningen. The area from the separation buoy up to the Port of Scheveningen.

**Tariff area Rotterdam-Rijnmond J:** Maasvlakte 2. The area including the remaining berths on the west side of the meridian of 004° 01.0'E, with the exception of the berths on the north bank of the Yangtzekanaal.

## 6. Seaport area Scheldemonden

**Tariff area Scheldemonden A:** The area from Flushing Roads up to and including all the berths and quays in Flushing Outer Harbour and the Flushing Inner Harbours, including the Kanaal door Walcheren and Middelburg up to and including the lock at Veere, Breskens, Sloehavens and all anchorages in the Western Scheldt, including Everingen A-E up to the line between Fort Ellewoutsdijk and a location west of the industrial zone around the Braakmanhaven.

**Tariff area Scheldemonden B:** The area from a line between Fort Ellewoutsdijk and a location (about 2 km outside the harbour entrance) west of the industrial zone around the Braakmanhaven up to and including all the berths and quays of the Braakmanhaven, the Put van Terneuzen until the locks (extreme ends of the breakwaters) and on the east side bounded by the line between Ossensisse – Bakendorp.

**Tariff area Scheldemonden C:** The area including all the berths and quays of the Terneuzen-Ghent Canal, from the locks (the extreme ends of the outside breakwaters) at Terneuzen up to the Dutch-Belgian border.

**Tariff area Scheldemonden D:** The area including all the berths and quays of the Western Scheldt from the line between Ossensisse and Bakendorp until the Dutch-Belgian border near Antwerp, and on the north side bounded by the exit of the Kanaal door Zuid-Beveland (Walsoorden, Hansweert, Wemeldinge, Kanaal door Zuid-Beveland).

**Tariff area Scheldemonden E:** The area including all the berths and quays of the entire Eastern Scheldt up to and including the Volkerak and up to the Roompotsluis, Schelde-Rijnkanaal, Veerse Meer.

**Tariff area Scheldemonden F:** The area including all the berths and quays of the Western Scheldt from the Dutch-Belgian border up to Antwerp.

**Tariff area Scheldemonden G:** The area including all the berths and quays of the Terneuzen-Ghent Canal from the Dutch-Belgian border up to Ghent.

## 6.12 CONTACT

For all other information, questions or remarks, you can contact us via [nrd.customerservice@loodswezen.nl](mailto:nrd.customerservice@loodswezen.nl) or by telephone +31 (0)596 61 81 88.



# OTHER INFORMATION



## 7. OTHER INFORMATION

### 7.1 ORDERING A PILOT

#### Incoming vessels

- a. Destination Delfzijl and Eemshaven - Westereems  
E.T.A. message to: Pilot Coordination Centre North  
Phone: +31 (0)596 61 36 72  
Fax: +31 (0)10 26 44 011  
E-mail: [lodicon@loodswezen.nl](mailto:lodicon@loodswezen.nl)  
VHF: 19
- b. Destination Harlingen - Vlieree  
E.T.A. message to: Pilot Coordination Centre North  
Phone: +31 (0)596 61 36 72  
Fax: +31 (0)10 26 44 011  
E-mail: [lodicon@loodswezen.nl](mailto:lodicon@loodswezen.nl)  
VHF: 19

#### Sailing / shifting vessels

E.T.D message to: Pilot Coordination Centre North  
Phone: +31 (0)596 61 36 72  
Fax: +31 (0)10 26 44 011

#### Operational matters

Please contact the Chief Pilot.  
Phone: +31 (0)596 61 8188

#### ETA / ETD messages

- a. E.T.A. messages destination Delfzijl and Eemshaven – Westereems compulsory, at least 12 hours before arrival at the Westereems Buoy.  
Confirmation of E.T.A. Westereems, 4 hours before arrival Westereems.
- b. E.T.A. messages destination Harlingen – Vlieree compulsory, at least 6 hours before arrival at Vlieree buoy ZS 15.
- c. E.T.D. messages compulsory, at least 4 hours before departure.

**NON-COMPLIANCE WITH THESE REGULATIONS MIGHT CAUSE DELAY AND/OR EXTRA COSTS.**

## 7.2 ADDRESSES

### Loodswezen North

Schildweg 16 A  
9979 XR EEMSHAVEN  
The Netherlands  
Tel.: +31 (0)596 61 81 88  
E-mail: [nrd.customerservice@loodswezen.nl](mailto:nrd.customerservice@loodswezen.nl)

### Loodswezen Amsterdam-IJmond

Kanaaldijk 242  
1975 AJ IJMUIDEN  
The Netherlands  
Tel.: +31 (0)255 56 45 45  
E-mail: [amsterdam-ijmond@loodswezen.nl](mailto:amsterdam-ijmond@loodswezen.nl)

### Loodswezen Rotterdam-Rijnmond

Markweg 200  
Port number: 6335  
3198 NB EUROPOORT – ROTTERDAM  
The Netherlands  
Tel.: +31 (0)88 900 30 00  
E-mail: [rtm.customerservice@loodswezen.nl](mailto:rtm.customerservice@loodswezen.nl)

### Loodswezen River Scheldt

Boulevard de Ruyter 8  
4381 KA VLISSINGEN  
The Netherlands  
Tel.: +31 (0)118 48 95 00  
E-mail: [scheldemonden@loodswezen.nl](mailto:scheldemonden@loodswezen.nl)

### Nederlands Loodswezen BV

Berghaven 16  
3151 HB Hoek van Holland  
The Netherlands  
Tel.: +31 (0)88 900 2500  
E-mail: [info@loodswezen.nl](mailto:info@loodswezen.nl)